



# Photo Optic Catalogue 2004/2005

**SYLVANIA**

by Sylvania Lighting International

Introduction 2

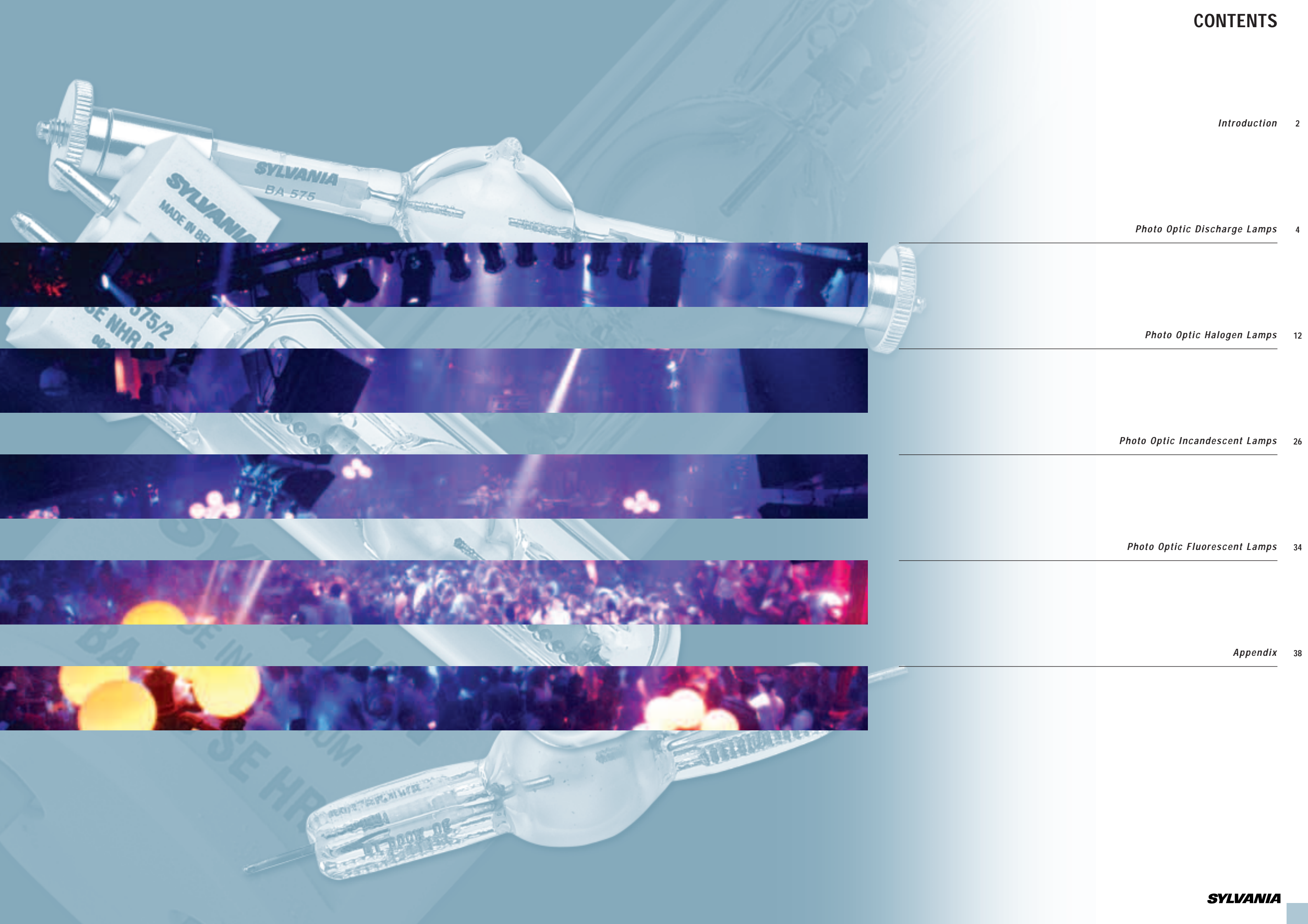
Photo Optic Discharge Lamps 4

Photo Optic Halogen Lamps 12

Photo Optic Incandescent Lamps 26

Photo Optic Fluorescent Lamps 34

Appendix 38



## SYLVANIA

Sylvania is one of the world's largest producers of light sources and manufactures a wide range of lamps: incandescent, halogen, low-energy, fluorescent and a comprehensive range of HID lamps and other specialist lighting products for the professional specifier and user.

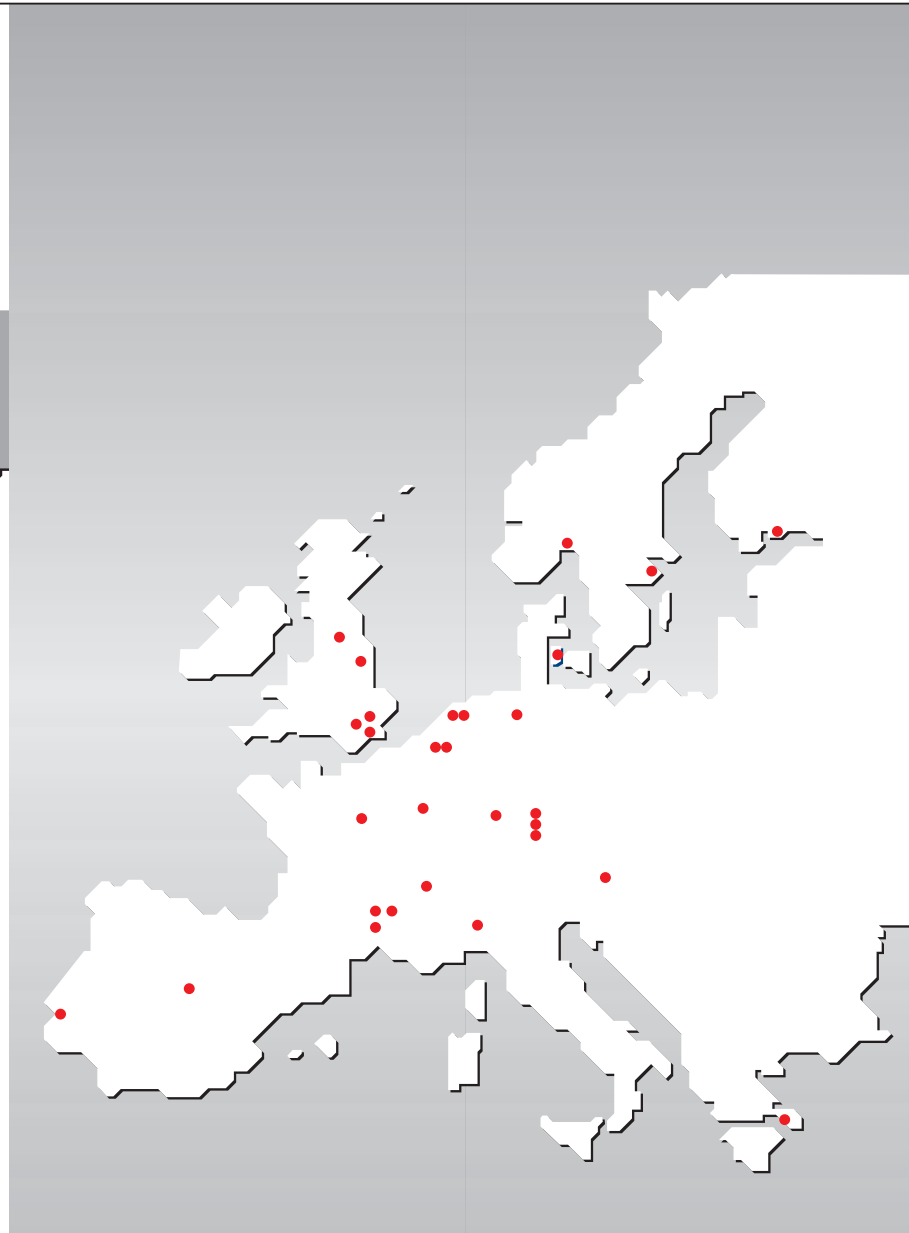
Sylvania lamps are distributed from stock, via our national sales organisations around the world, to original equipment manufacturers and retail outlets and through professional wholesale distribution to installers and end users.



### COMPETENCY CENTRES

Sylvania has created Competency Centres for its major lamp product groups - bringing specific design, marketing and production engineering skills, for each key lamp group, together in one place: to co-ordinate and focus the years of experience this brings to new product development; and to bringing products into the market place efficiently and effectively.

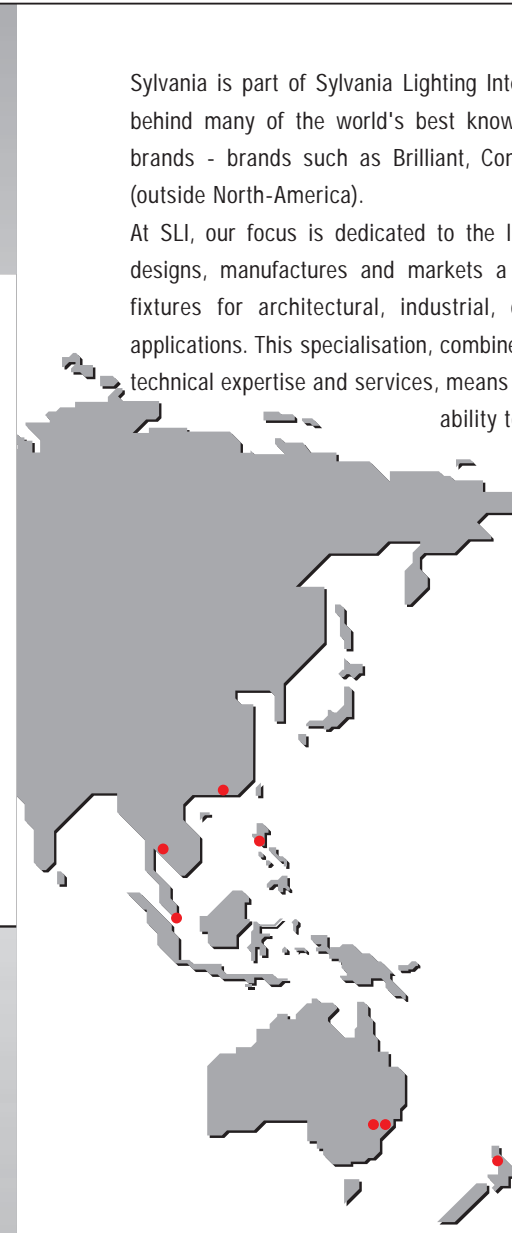
- Erlangen (Germany): produces fluorescent lamps of all types.
- Lyon (France): produces decorative incandescent lamps such as candle and globe lamps.
- Shipley (England): produces innovative, energy-saving compact fluorescent lamps.
- Tienen (Belgium): specialises in producing low voltage and mains voltage halogen lamps and HID lamps.



Erlangen (Germany)



Lyon (France)



Shipley (England)



Tienen (Belgium)



## SYLVANIA LIGHTING INTERNATIONAL

Sylvania is part of Sylvania Lighting International (SLI): the principal company behind many of the world's best known professional and consumer lighting brands - brands such as Brilliant, Concord, Lumiance, Marlin and Sylvania (outside North-America).

At SLI, our focus is dedicated to the lighting industry and nothing else. SLI designs, manufactures and markets a diverse range of lamps and lighting fixtures for architectural, industrial, commercial, residential and outdoor applications. This specialisation, combined with our versatile range of products, technical expertise and services, means Sylvania Lighting International has the ability to deliver all your lighting requirements.

*BriteArc Single Ended Non Hot Restrike* 6

*BriteArc Single Ended High Colour Temperature* 7

*BriteArc Single Ended Hot Restrike* 8

*BriteArc Double Ended* 9

*BriteArc Short Arc* 10

*Pulsed Xenon* 11



**SYLVANIA**  
MADE IN BELGIUM  
BA 575 SE HR

## BRITEARC SINGLE ENDED NON HOT RESTRIKE (BA SE NHR)

BriteArc Single Ended Non Hot Restrike lamps are compact light sources with excellent performance, specially designed for a wide variety of audio-visual applications. The BriteArc lamps are filled with mercury and rare earth elements to obtain a high efficacy and a stable colour with a very good rendering index. They can be re-struck after 10 minutes. These lamps can be operated in any position.



BA 575 SE NHR

BA 1200 SE NHR

### FEATURES

- High luminous efficacy
- Low infrared
- Colour stability
- Excellent lumen maintenance
- Physical ruggedness

### APPLICATIONS

- Show lighting
- Theatre
- Discotheque lighting
- Follow spots
- Effect lighting
- Architectural

### DIRECTIONS FOR USE

- Burning position: universal
- Restrike after 10 minutes
- Only use in closed fixtures
- Can be operated on an electronic power supply or on a magnetic ballast

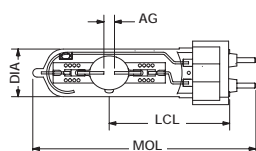


Fig. 1

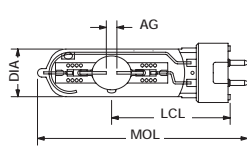


Fig. 2

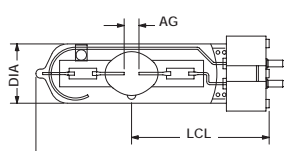


Fig. 3

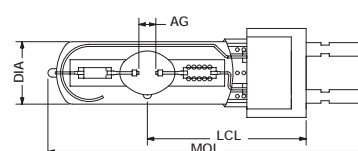


Fig. 4

Item description	Watt W	Voltage V	Current A	Ignition Pulse kV	Average Life hrs	Replacement Time hrs	Luminous Flux lm	Colour Temp. K	CRI	Total UV-output W
------------------	-----------	--------------	--------------	-------------------------	------------------------	----------------------------	------------------------	----------------------	-----	-------------------------

#### BA SE NHR

BA 150 SE NHR	150	95	1.80	1.9	750	1000	12000	5600	90	15
BA 400 SE NHR	400	67	6.90	2.2	650	750	33000	6200	92	40
BA 575 SE NHR	575	95	6.95	2.2	750	1000	49000	5600	90	60
BA 700 SE NHR	700	72	11.00	3.4	1000	1200	56000	5600	95	70
BA 1200 SE NHR	1200	100	13.80	2.5	750	1000	110000	6000	95	100

#### BA SE D (Long Life)

BA 150 SE D	150	95	1.80	3	6000	8000	9300	6200	60	15
BA 200 SE D	200	70	3.30	1.9	2000	2300	13700	5600	70	15
BA 250 SE D	250	95	3.30	1.9	2000	2300	18800	5800	80	18
BA 575 SE D	575	95	6.95	2.2	2000	2500	49000	5600	90	60

Item description	Cap	Dimensions				Max.bulb Temp. C°	Max. pinch Temp. C°	Figure Nr.	Packing Quantity	Ordering Code
	MOL mm	AG mm	Dia mm	LCL mm						

#### BA SE NHR

BA 150 SE NHR	GY9.5	80	5	17	37	700	350	2	10	0023987
BA 400 SE NHR	GX9.5	112	6	23	62	700	350	3	10	0023958
BA 575 SE NHR	GX9.5	125	7	30	65	700	350	3	10	0023960
BA 700 SE NHR	G22	155	8	30	75	700	350	4	10	0023961
BA 1200 SE NHR	G22	175	10	40	85	700	350	4	10	0023935

#### BA SE D (Long Life)

BA 150 SE D	G12	105	5	23	56	500	350	1	10	0023976
BA 200 SE D	GY9.5	108	5	23	55	500	350	2	10	7220168
BA 250 SE D	GY9.5	108	5	23	55	500	350	2	10	7220169
BA 575 SE D	GX9.5	125	7	30	65	600	350	3	10	0023981

Nominal values measured at rated wattage in horizontal position.

**BRITEARC SINGLE ENDED HIGH COLOUR TEMPERATURE (BA/2 SE)**

BriteArc Single Ended/2 lamps are compact light sources with a very high colour temperature offering stable crisp bright light during the complete lamp life. They can be re-struck after about 10 minutes. These lamps can be operated in any position.



BA 250/2 SE D 8.5



BA 575/2 SE NHR 8.5

**FEATURES**

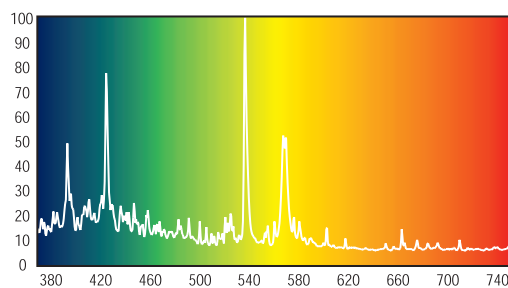
- Crisp bright light
- High luminous efficacy
- Low infrared
- Colour stability
- Excellent lumen maintenance
- Physical ruggedness

**APPLICATIONS**

- Show lighting
- Theatre
- Discotheque lighting
- Effect lighting

**DIRECTIONS FOR USE**

- Burning position: universal
- Restrike after 10 minutes
- Only use in closed fixtures
- Can be operated on an electronic power supply or on a magnetic ballast



BA/2 8500 K

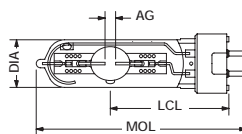


Fig. 1

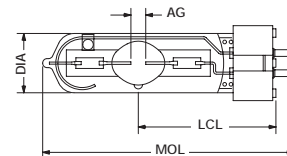


Fig. 2

Item description	Watt W	Voltage V	Current A	Ignition Pulse kV	Average Life hrs	Replacement Time hrs	Luminous Flux lm	Colour Temp. K	CRI	Total UV-output W
BA 250/2 SE D 8.5	250	95	3.30	2.2	2000	2300	18000	8500	65	30
BA 575/2 SE NHR 7.2	575	95	6.95	2.2	1000	1200	45000	7200	85	65
BA 575/2 SE NHR 8.5	575	95	6.95	2.2	1000	1200	44000	8500	80	65

Item description	Cap	Dimensions			Max. bulb Temp. C°	Max. pinch Temp. C°	Figure Nr.	Packing Quantity	Ordering Code
	MOL mm	AG mm	Dia mm	LCL mm					
BA 250/2 SE D 8.5	GY9.5	108	5	23	55	500	350	1	10 0023998
BA 575/2 SE NHR 7.2	GX9.5	125	7	30	65	700	350	2	10 0024002
BA 575/2 SE NHR 8.5	GX9.5	125	7	30	65	700	350	2	10 0024000

Nominal values measured at rated wattage in horizontal position.

## BRITEARC SINGLE ENDED HOT RESTRIKE (BA SE HR)

BriteArc Single Ended Hot Restrike lamps are compact light sources, designed for optimum optical efficiency. The BriteArc lamps are filled with mercury and rare earth elements to obtain a high efficacy and a stable colour with a very good rendering index. They can be re-struck at any time with a voltage peak from 25 to 55 kV. These lamps can be operated in any position.



BA 200 SE HR



BA 575 SE HR



BA 1200 SE HR

### FEATURES

- High luminous efficacy
- Low infrared
- Colour stability
- Excellent lumen maintenance
- Physical ruggedness
- Hot restrike

### APPLICATIONS

- TV-Studio lighting
- Photo studios
- Show lighting
- Theatre
- Follow spots

### DIRECTIONS FOR USE

- Burning position: universal
- Only use in closed fixtures
- Can be operated on an electronic power supply or on a magnetic ballast

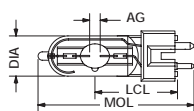


Fig. 1

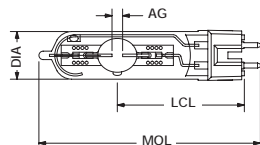


Fig. 2

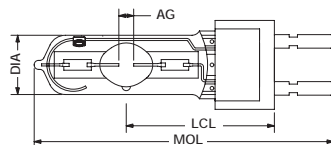


Fig. 3

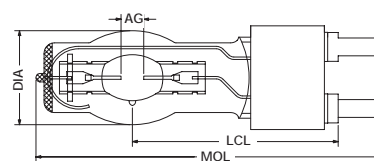


Fig. 5

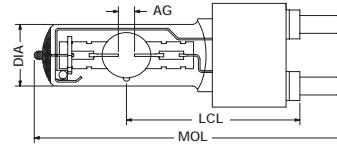


Fig. 4

Item description	Watt W	Voltage V	Current A	Ignition Pulse kV	Average Life hrs	Replacement Time hrs	Luminous Flux lm	Colour Temp. K	CRI	Total UV-output W
BA 200 SE HR	200	70	3.3	25.0	200	450	15000	5600	95	20
BA 400 SE HR	400	67	6.9	25.0	650	750	33000	6200	92	40
BA 575 SE HR	575	95	6.9	25.0	750	1000	49000	5600	90	50
BA 800 SE HR	800	95	8.5	25.0	1000	1500	64000	6000	95	(*)
BA 1200 SE HR	1200	100	13.8	45.0	750	1000	110000	6000	95	100
BA 2500 SE HR	2500	115	25.6	45.0	500	750	240000	6000	95	200

Item description	Cap	Dimensions				Max. bulb Temp. C°	Max. pinch Temp. C°	Figure Nr.	Packing Quantity	Ordering Code
	MOL mm	AG mm	Dia mm	LCL mm						
BA 200 SE HR	GZY9.5	80	5	20	39	700	350	1	10	0023941
BA 400 SE HR	GZZ9.5	110	6	23	60	700	350	2	10	0023883
BA 575 SE HR	G22	145	7	30	70	700	350	3	10	0023932
BA 800 SE HR	G22	145	7	31	70	700	350	3	10	0023992
BA 1200 SE HR	G38	200	10	40	107	700	350	4	10	0023933
BA 2500 SE HR	G38	240	14	60	127	700	450	5	10	0023934

\* BA800 SE HR is a UV-stop lamp.

Nominal values measured at rated wattage in horizontal position.

**BRITEARC DOUBLE ENDED (BA DE)**

BriteArc Double Ended lamps are metal halide light sources with excellent performance, specially designed for a wide variety of audio-visual applications. The BriteArc lamps are filled with mercury and rare earth elements to obtain a high efficacy and a stable colour. They can be re-struck at any time with a voltage peak from 25 to 55 kV.



**FEATURES**

- High luminous efficacy
- Low infrared
- Colour stability
- Excellent lumen maintenance
- Physical ruggedness
- Hot restrike

**APPLICATIONS**

- Show lighting
- Theatre
- Discotheque lighting
- Follow spots
- Effect lighting
- Studio lighting

**DIRECTIONS FOR USE**

- Burning position: universal for 575 W and 1200 W; horizontal plus or minus 30 degrees for 2500 W; horizontal plus or minus 15 degrees for 4000 W, 6000 W and 12000 W
- Only use in closed fixtures
- Can be operated on an electronic power supply or on a magnetic ballast

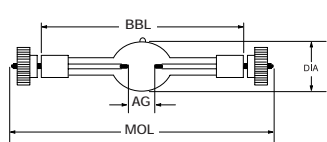


Fig. 1

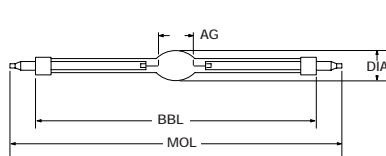


Fig. 2

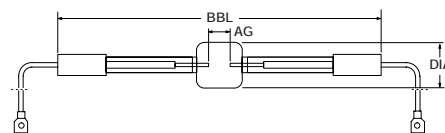


Fig. 3

Item description	Watt W	Voltage V	Current A	Average Life hrs	Replacement Time hrs	Luminous Flux lm	Colour Temp. K	CRI	Total UV-output W
BA 575 DE	575	95	7.0	750	1000	49000	5600	70	70
BA 1200 DE	1200	100	13.8	750	1000	110000	5600	80	140
BA 1200 DE S	1200	100	13.8	750	1000	95000	7200	77	160
BA 2500 DE	2500	115	26.6	500	750	240000	5600	90	310
BA 4000 DE	4000	200	24.0	500	750	380000	6000	85	640
BA 6000 DE	6000	123	55.0	350	450	570000	6000	90	1000
BA 12000 DE	12000	160	82.0	500	550	1100000	6000	90	2200

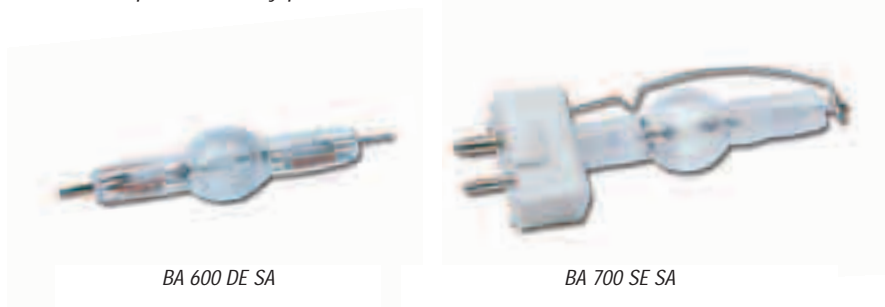
Item description	Cap	Dimensions				Max. bulb Temp. C°	Max. pinch Temp. C°	Figure Nr.	Packing Quantity	Ordering Code
		MOL mm	AG mm	Dia mm	BBL mm					
BA 575 DE	SFc10-4	136	7	21	115	800	230	1	10	0023921
BA 1200 DE	SFc15.5-6	220	10	28	180	800	230	1	10	0023922
BA 1200 DE S	SFc10-4*	136	7	21	115	800	230	1	10	0023996
BA 2500 DE	SFa21-12	355	20.5	32	290	800	230	2	1	0023923
BA 4000 DE	SFa21-21	405	34	40	340	800	230	2	1	0023924
BA 6000 DE	S25.5X60		22	52	450	900	230	3	1	0023925
BA 12000 DE	S30X70		32	65	470	900	230	3	1	0023927

\* Pre-focused base  
Nominal values measured at rated wattage in horizontal position.



## BRITEARC SHORT ARC (BA SA)

BriteArc Short Arc Lamps are very compact high performance lamps, designed for the highest optical efficiency. These lamps can be operated in any position.



### FEATURES

- Highest optical efficiency
- Low infrared
- Colour stability
- Excellent lumen maintenance
- Physical ruggedness

### APPLICATIONS

- Show lighting
- Theatre
- Discotheque lighting
- Effect lighting
- Studio lighting

### DIRECTIONS FOR USE

- Burning position: universal
- Only use in closed fixtures
- Can be operated on an electronic power supply or on a magnetic ballast

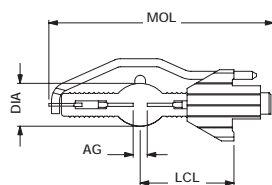


Fig. 1

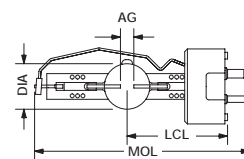


Fig. 2

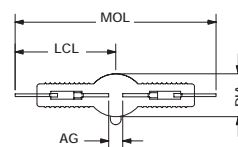


Fig. 3

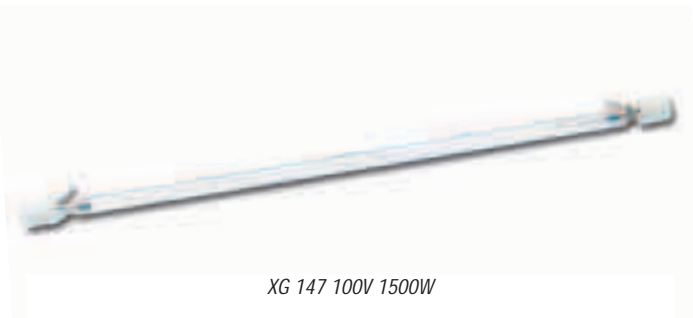
Item description	Watt W	Voltage V	Current A	Ignition Pulse kV	Average Life hrs	Replacement Time hrs	Luminous Flux lm	Colour Temp. K	CRI	Total UV-output W
BA 600 SE SA (*)	600	95	6.3	3	300	350	48000	5300	90	50
BA 700 SE SA	700	70	11.0	2.5	500	700	50000	6600	75	80
BA 600 DE SA (*)	600	95	7.0	3	300	350	48000	5300	90	50

Item description	Cap	Dimensions				Max. bulb Temp. C°	Max. pinch Temp. C°	Figure Nr.	Packing Quantity	Ordering Code
		MOL mm	AG mm	Dia mm	LCL mm					
BA 600 SE SA (*)	FaX1.5	84	5	16	35	900	350	1	10	0023965
BA 700 SE SA	GY9.5	85	4	17	39	1000	450	2	10	0024003
BA 600 DE SA (*)	Mo pins	75	5	16		900	350	3	10	0023966

\* Can be re-struck any time with a voltage peak of 25 kV. Nominal values measured at rated wattage in horizontal position.

**PULSED XENON**

Instant ignition lamps creating a strobe effect.



XG 147 100V 1500W

**FEATURES**

- Near continuous spectrum ranging from 200-1000nm
- Colour temperature: 5400K. Xenon spectrum, similar to daylight
- Instant ignition, no warming up time
- Can be dimmed

**APPLICATIONS**

- Strobe lights in disco's

**DIRECTIONS FOR USE**

- Operate on a semi resonant ballast
- Ignitor providing a starting pulse of 10kV required
- Forced –air cooling needed
- Due to the high starting voltage, use only insulated lampholders
- The UV radiation must be cut out with a filter glass

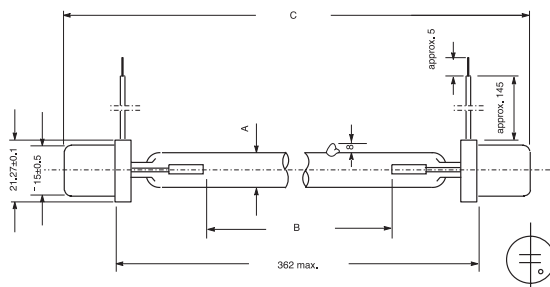


Fig. 1

Item description	Voltage	Watt	Base	Burning Position	Rated Av. Life h	Lamp Current A
------------------	---------	------	------	------------------	------------------	----------------

XG 147 100V 1500W	100	1500	CAP15.8/14.7CABLE	Any	500(1)	15
-------------------	-----	------	-------------------	-----	--------	----

Item description	Dimensions (mm)			Max.perm. base temp. C	Max.perm. scal temp. C	Figure Nr.	Packing Quantity	Ordering Code
	A Diameter	B Arc Gap	C MOL					

XG 147 100V 1500W	12	307	391	180	350	1	1	9023475
-------------------	----	-----	-----	-----	-----	---	---	---------

(1) At continuous operation

<i>Dichroic Reflector 50mm GZ6.35</i>	<i>14</i>
<i>Dichroic Reflector 42/50mm GX5.3</i>	<i>15</i>
<i>Dichroic Reflector 50mm GY5.3</i>	<i>17</i>
<i>Dichroic Reflector 35/44/57mm</i>	<i>18</i>
<i>Capsule Lamps Low Voltage</i>	<i>19</i>
<i>Capsule Lamps Mains Voltage</i>	<i>20</i>
<i>Studio/Film Double Ended</i>	<i>21</i>
<i>Studio/Film Single Ended</i>	<i>22</i>
<i>Stage/Theatre Single Ended</i>	<i>23</i>
<i>Studio U-shaped</i>	<i>24</i>

## DICHROIC REFLECTOR 50 MM GZ6.35



EFP 12V 100W

### FEATURES

- Compact filament
- Highly efficient reflector/lamp combination
- Dichroic reflector, which radiates 75% of heat rearwards

### APPLICATIONS

- Film projectors
- Fiber optics
- Enlargers
- Overhead projectors
- Slide projectors

### DIRECTIONS FOR USE

- No dimming lower than 10% of rated voltage

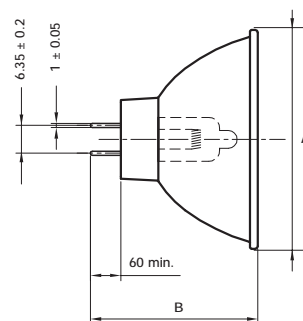


Fig. 1

Item description	ANSI	LIF	Base	Voltage	Watt	Dimensions		Working distance	Colour Temp.	Rated Av. Life
						A mm	B mm			
EFM 8V 50W	EFM	A1/229	GZ6.35	8	50	50	42	32	3400	50
EFN 12V 75W	EFN	A1/230	GZ6.35	12	75	50	42	32	3400	50
EFP 12V 100W	EFP	A1/231	GZ6.35	12	100	50	42	32	3400	50
EFR 15V 150W	EFR	A1/232	GZ6.35	15	150	50	42	32	3400	50

Item description	Reflector Surface	Burning Position	Max. Perm. pinch temp. degr.C	Max. Perm. bulb temp. degr.C	Light Output lm	Figure Nr.	Packing Quantity	Ordering Code
EFM 8V 50W	Smooth	S105	400	900	380	1	50	0061341
EFN 12V 75W	Smooth	S105	400	900	550	1	50	0061342
EFP 12V 100W	Smooth	S105	400	900	650	1	50	0061344
EFR 15V 150W	Smooth	S105	400	900	800	1	50	0061350

**DICHROIC REFLECTOR 42/50 MM GX5.3**



EKE 21V 150W



ELC 24V 250W



EXR 82V 300W

**FEATURES**

- Compact filament
- Perfect alignment of the burner
- Highly efficient reflector/lamp combination
- Dichroic reflector, which radiates 75% of heat rearwards

**APPLICATIONS**

- Microfilm readers
- Medical equipment
- Fiber optic applications
- Enlargers
- Overhead projectors
- Slide projectors

**DIRECTIONS FOR USE**

- No dimming lower than 10% of rated voltage

Item description	ANSI	LIF	Base	Voltage	Watt	Dimensions		Filament Type	Working distance mm	Colour Temp. K	Rated Av. Life h
						A mm	B mm				
DED 13.8V 85W	DED		GX5.3	13.8	85	50.7	44.5	C-8	165	3150	1000
DDM 19V 80W	DDM		GX5.3	19	80	50.7	44.5	CC-6	152.4	3350	50
DDS 21V 80W	DDS		GX5.3	21	80	50.7	44.5	CC-6	165	3125	1000
DDL 20V 150W	DDL		GX5.3	20	150	50.7	44.5	CC-6	194.5	3150	500
EJM 21V 150W	EJM		GX5.3	21	150	50.7	44.5	CC-6	38.1	3400	40
EJV 21V 150W	EJV		GX5.3	21	150	50.7	44.5	CC-6	44.5	3400	40
ELD 21V 150W	ELD		GX5.3	21	150	50.7	44.5	CC-6	165	3400	40
EKE 21V 150W	EKE		GX5.3	21	150	50.7	44.5	CC-6	44.5	3250	200
EJA 21V 150W	EJA		GX5.3	21	150	50.7	44.5	CC-6	28	3400	40
EWf 24V 200W	EWf		GX5.3	24	200	50.7	44.5	CC-8	298.5	3350	50
EJL 24V 200W	EJL	A1/252	GX5.3	24	200	50.7	44.5	CC-6	31.7	3400	50
ELC 24V 250W	ELC	A1/259	GX5.3	24	250	50.7	44.5	CC-6	31.7	3400	50
ELC 24V 250W 500H	ELC/5H		GX5.3	24	250	50.7	44.5	CC-6	31.8	3400	500
EXY 82V 250W	EXY		GX5.3	82	250	42	44.5	CC-8	152.4	3200	250
EXR 82V 300W	EXR		GX5.3	82	300	42	44.5	CC-8	152.4	3350	35
FHS 82V 300W	FHS		GX5.3	82	300	42	44.5	CC-8	152.4	3300	70

## DICHROIC REFLECTOR 42/50 MM GX5.3

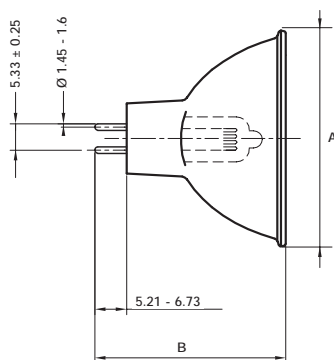


Fig. 1

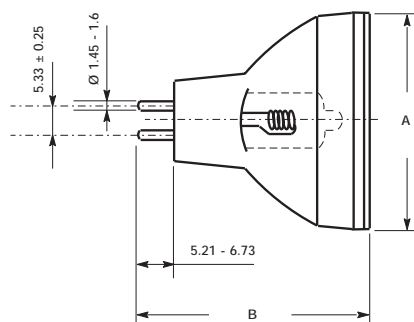


Fig. 2

Item description	Reflector Surface	Burning Position	Max.perm. pinch temp. degr.C	Max.perm. bulb temp. degr.C	Min. centre intensity lux	Corner centre ratio %	Figure Nr.	Packing Quantity	Ordering Code
DED 13.8V 85W	Smooth	S105	350	900	1000	75	1	10	9060967
DDM 19V 80W	Faceted	S90	350	900	680	15	1	10	9060954
DDS 21V 80W	Faceted	S105	350	900	250	50	1	10	9060668
DDL 20V 150W	Faceted	S105	350	900	400	90	1	10	9060984
EJM 21V 150W	Smooth	S90	400	900	1200	50	1	10	9061181
EJV 21V 150W	Smooth	S90	400	900	1500	40	1	10	9060833
ELD 21V 150W	Stippled	S90	400	900	320	30	1	10	9060957
EKE 21V 150W	Smooth	S90	400	900	750	40	1	10	9060943
EJA 21V 150W	Smooth	S90	400	900	1200	50	1	10	9060921
EFW 24V 200W	Faceted	S90	400	900	800	32	1	10	9060890
EJL 24V 200W	Smooth	S90	400	900	1100	50	1	100	0061011
ELC 24V 250W	Smooth	S90	400	900	1500	50	1	100	0061740
ELC 24V 250W 500H	Smooth	S90	350	900	960	50	1	100	0061741
EXY 82V 250W	Faceted	S90	350	900	610	46	2	10	9061182
EXR 82V 300W	Faceted	S90	400	900	1100	46	2	10	9061039
FHS 82V 300W	Faceted	S90	400	900	1000	46	2	10	9060850

**DICHROIC REFLECTOR 50 MM GY5.3**



ENH 120V 250W

**FEATURES**

- Compact filament
- Perfect alignment of the burner
- Highly efficient reflector/lamp combination
- Dichroic reflector, which radiates 75% of heat rearwards

**APPLICATIONS**

- Microfilm readers
- Medical equipment
- Fiber optic applications
- Enlargers
- Overhead projectors
- Slide projectors

**DIRECTIONS FOR USE**

- No dimming lower than 10% of rated voltage

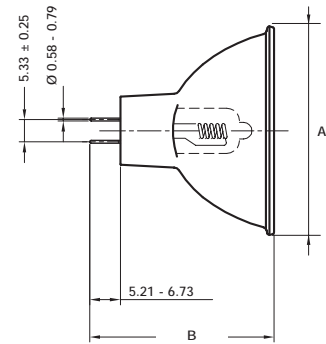


Fig. 1

Item description	ANSI	LIF	Base	Voltage	Watt	Dimensions		Filament Type	Working distance mm	Colour Temp. K	Rated Av. Life h
						A mm	B mm				
EWW 82V 250W	EWW		GY5.3	82	250	50.7	44.5	CC-8	298.5	3300	50
ENX 82V 360W	ENX		GY5.3	82	360	50.7	44.5	CC-8	298.5	3300	75
FXL 82V 410W	FXL		GY5.3	82	410	50.7	44.5	CC-8	298.5	3300	50
JCR 100V 300W			GY5.3	100	300	50.7	44.5	CC-8	298.5	3200	50
ESD 120V 150W	ESD		GY5.3	120	150	50.7	44.5	CC-8	44.5		12
ENH 120V 250W	ENH		GY5.3	120	250	50.7	44.5	CC-8	152.4	3250	175
ELH 120V 300W	ELH		GY5.3	120	300	50.7	44.5	CC-8	152.4	3350	35
ENG 120V 300W	ENG		GY5.3	120	300	50.7	44.5	CC-8	152.4	3450	15

Item description	Reflector Surface	Burning Position	Max. Perm. pinch temp. degr.C	Max. Perm. bulb temp. degr.C	Min. Centre intensity lux	Corner centre ratio %	Figure Nr.	Packing Quantity	Ordering Code
ENX 82V 360W	Faceted	S90	400	900	4300	25	1	10	9060846
FXL 82V 410W	Faceted	S90	400	900	4700	34	1	10	9061768
JCR 100V 300W	Faceted	S90	400	900	5000	20	1	10	9061063
ESD 120V 150W	Faceted	S90	400	900			1	10	9061358
ENH 120V 250W	Faceted	S90	400	900	800	40	1	10	9060940
ELH 120V 300W	Faceted	S90	400	900	850	45	1	10	9060813
ENG 120V 300W	Stippled	S90	400	900	1350	35	1	10	9061183

## DICHROIC REFLECTOR 35/44/57 MM



DNF 21V 150W



EMM 24V 250W



FLT 13.8V 25W

### FEATURES

- Compact filament
- Perfect alignment of the burner
- Highly efficient reflector/lamp combination
- Dichroic reflector, which radiates 75% of heat backwards

### APPLICATIONS

- Film projectors
- Microfilm readers
- Medical equipment
- Enlargers
- Overhead projectors
- Slide projectors

### DIRECTIONS FOR USE

- No dimming lower than 10% of rated voltage.

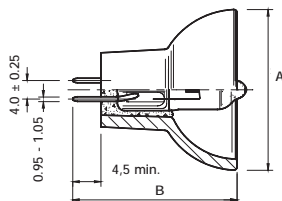


Fig. 1

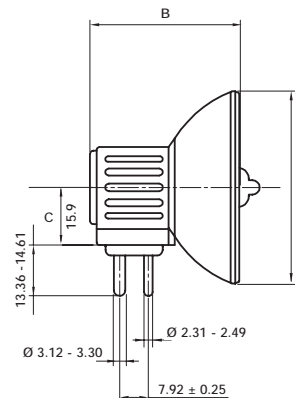


Fig. 2

Item description	ANSI	LIF	Base	Voltage	Watt	Dimensions			Filament Type	Working distance mm	Colour Temp. K	Rated Av. Life h
						A mm	B mm	C mm				
DNF 21V 150W	DNF	A1/266	GX7.9	21	150	57.2	45.1	15.9	CC-6	69.1	3400	25
EMM/EKS 24V 250W	EMM/EKS	A1/258	GX7.9	24	250	44.5	47.5	15.9	CC-6	65.8	3400	50
FLT 13.8V 25W/S	FLT		GZ4	13.8	25	35.3	38		CC-6	51.5	3100	400

Item description	Reflector Surface	Burning Position	Max. Perm. pinch temp. degr.C	Max. Perm. bulb temp. degr.C	Min. Centre intensity lux	Corner centre ratio %	Figure Nr.	Packing Quantity	Ordering Code
DNF 21V 150W	Smooth	P4	400	900	2100	50	2	10	9060743
EMM/EKS 24V 250W	Smooth	P4	400	900	750	55	2	10	9060918
FLT 13.8V 25W/S	Faceted	S105	350	900	1300	700	1	10	9060877



CAPSULE LAMPS LOW VOLTAGE



FCS 24V 150W G6.35



FCR 12V 100W



FDS 24V 150W

FEATURES

- Low voltage, quartz halogen lamp
- Flat filament
- Constant high light output
- Pre-focused based lamps have a better defined filament position

APPLICATIONS

- Studio lighting
- Film lighting
- Theatre lighting
- Microfilm readers
- Film projectors
- Overhead projectors
- Slide projectors

DIRECTIONS FOR USE

- No dimming lower than 10% of rated voltage

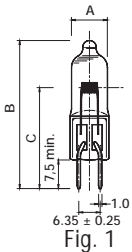


Fig. 1

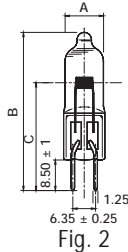


Fig. 2

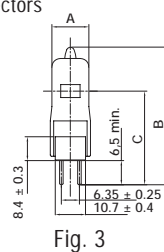


Fig. 3

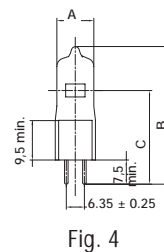


Fig. 4

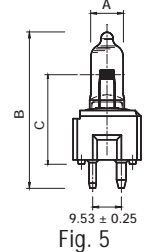
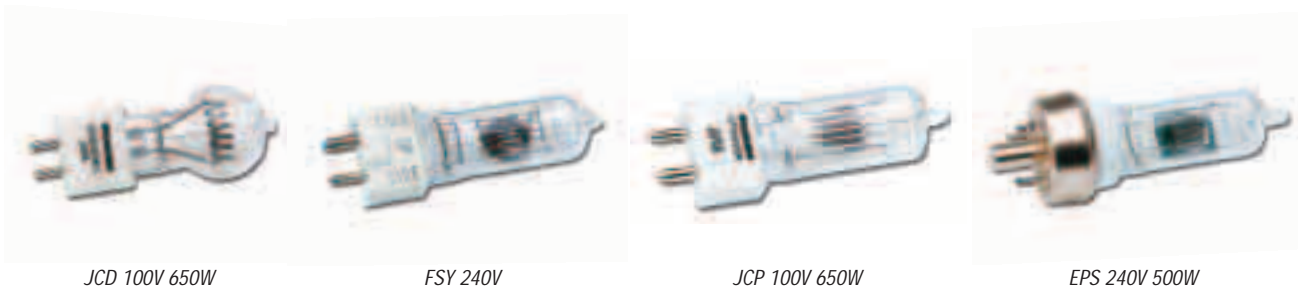


Fig. 5

Item description	ANSI	LIF	Base	Voltage	Watt	Dimensions			Filament	
						A mm	B mm	C mm	Type	Dimensions W mm H mm
EVB/BRJ 15V 150W	EVB/BRJ	A1/234	G6.35	15	150	11.5	44	30	CF-6	5.0 3.0
FCS 24V 150W	FCS	A1/216	G6.35	24	150	13.5	50	32	CF-6	6.1 3.0
EHJ 24V 250W	EHJ	A1/223	G6.35	24	250	13.5	55	33	CF-6	7.1 3.5
FGX 24V 250W	FGX	M33	G6.35	24	250	13.5	55	33	CF-6	10.0 5.0
EWX 24V 250W	EWX		G6.35	24	250	11.5	44	29	CC	5.6 3.15
FNT 24V 275W	FNT		G6.35	24	275	13.5	55	33	CF-6	7.2 3.5
EVD 36V 400W	EVD	A1/239	G6.35	36	400	18.0	60	36	CF-6	9.5 4.7
FCR 12V 100W	FCR	A1/215	GY6.35	12	100	11.5	44	30	CF-6	6.7 4.6
FLW 24V 300W	FLW		GY6.35	24	300	13.5	55	33	CF-6	6.7 4.6
JC 24V 300W			GY6.35	24	300	13.5	55	33	CF-6	6.7 4.6
FDS/FDT 24V 150W	FDS/FDT	A1/262	GZ9.5	24	150	13.5	57	27	CF-6	5.8 2.9

Item description	Approx. Lumens lm	Colour Temp. K	Rated Av. Life h	Burning Position	Max. pinch temp. degr.C	Max. bulb temp. degr.C	Figure Nr.	Packing Quantity	Ordering Code
EVB/BRJ 15V 150W	5000	3400	50	S90	400	900	1	10	0061303
FCS 24V 150W	6000	3400	50	S90	400	900	1	10	0061374
EHJ 24V 250W	10000	3400	50	S90	400	900	1	10	0061367
FGX 24V 250W	8400	3200	300	S90	350	900	1	10	0061465
EWX 24V 250W	8200	3400	50	S90	400	900	1	10	0061494
FNT 24V 275W	10000	3400	75	S90	400	900	1	10	9061150
EVD 36V 400W	16000	3400	50	S90	400	900	1	10	9060826
FCR 12V 100W	3400	3400	50	S90	400	900	2	10	0061373
FLW 24V 300W	10450	3500	50	S90	400	900	3	10	9061142
JC 24V 300W	9900	3400	50	S90	400	900	4	10	9061010
FDS/FDT 24V 150W	5000	3400	50	S90	400	900	5	10	9060924

## CAPSULE LAMPS MAINS VOLTAGE



### FEATURES

- Compact quartz halogen lamp
- Maximum light output, but relatively low life
- Pre-focused based lamps have a better defined filament position

### APPLICATIONS

- Overhead projectors
- Slide projectors
- Photo printers

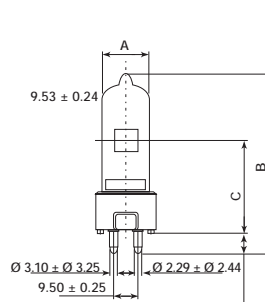


Fig. 6

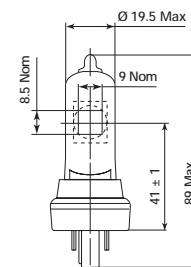


Fig. 7

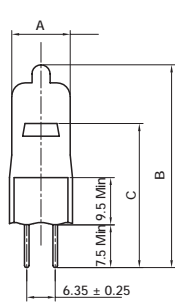


Fig. 1

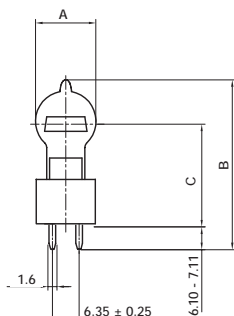


Fig. 2

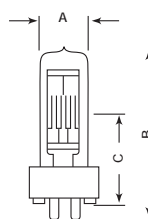


Fig. 3

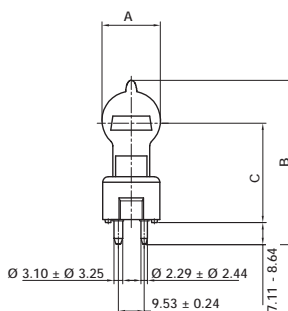


Fig. 4

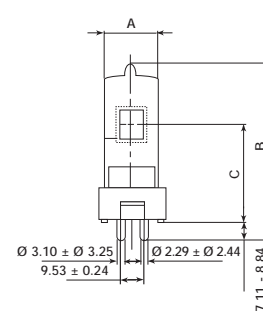


Fig. 5

Item description	ANSI	LIF	Base	Voltage	Watt	Dimensions			Filament	
						A mm	B mm	C mm	Type	Dimensions W mm H mm
ESY 100V 150W	ESY		G6.35	100	150	13.5	50	32	CC-6	8.1 2.8
JCD 100V 650W			G6.35	100	650	22.0	63	36.5	CC-6	14.0 5.3
FSY 240V 400W	FSY		GY9.5	240	400	20.0	77	36.5	C-13D	10.7 12.2
DYS/DYV 120V 600W	DYS/DYV	A1/264	GY9.5	120	600	22.0	63	36.5	CC-6	15.0 5.2
BVA 120V 900W	BVA		GY9.5	120	900	23.0	95	44.5	C-13D	10.5 12.2
JCP 100V 650W			GY9.5	100	650	18.0	76	36.5	C-13D	8.6 8.7
EPS 240V 500W	EPS	A1/268	G17t-7	240	500	19.5	89	41	C-13D	9.0 8.6

Item description	Approx. Lumens lm	Colour Temp. K	Rated Av.Life h	Burning Position	Max. pinch temp. degr.C	Max. bulb temp. degr.C	Figure Nr.	Packing Quantity	Ordering Code
ESY 100V 150W	3300	3050	200	S10	400	900	1	10	9060962
JCD 100V 650W	17500	3200	150	ANY	400	900	2	10	9061060
FSY 240V 400W	(1)	3200	75	S90	400	900	3	24	9060889
DYS/DYV 120V 600W	17000	3200	75	S90	400	900	4	10	9060779
BVA 120V 900W	(1)	3300	75	S90	400	900	5	10	9061306
JCP 100V 650W	18750	3300	75	ANY	400	900	6	10	9061018
EPS 240V 500W	(1)	3250	50	S90	400	900	7	10	9060927

**STUDIO/FILM DOUBLE ENDED**

Mains voltage double ended halogen lamps mainly used in studio and film.



DXX 240V 800W



FEX 240V 2000W

**FEATURES**

- High constant light output
- High colour temperature

**APPLICATIONS**

- Electronic News Gathering (ENG)
- Studio lighting
- Film lighting
- Overhead projectors (FAD type)

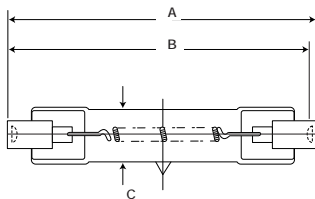


Fig. 1

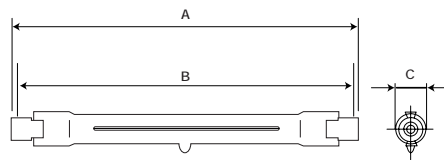


Fig. 2

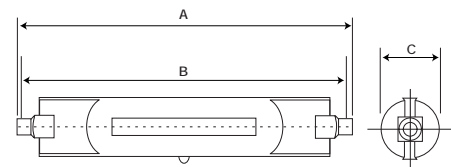


Fig. 3

Item description	ANSI	LIF	Voltage	Watt	Base	Dimensions			Rated Av. Life h
						A max mm	B mm	C mm	
FAD 118V 650W	FAD	P2/6	118	650	R7s	80.3	74.9	14	100
DXX 240V 800W	DXX	P2/13	240	800	R7s	80.3	74.9	14	75
FDG 230V 1000W	FDG	P1/12	230	1000	R7s	127.1	121.7	12	15
EME 230V 800W	EME	P2/11	230	800	R7s	119.6	114.2	12	150
FEX 230V 2000W	FEX	P2/27	230	2000	RX7s	141.5	138.1	28	300

Item description	Filament Type	Lumen Output Lm	Colour Temp. K	Burning Position	Max. Permissible pinch temp. degr. C	Figure Nr.	Packing Quantity	Ordering Code
FAD 118V 650W	CC-8	16500	3200	P4	400	1	50	0061371
DXX 240V 800W	CC-8	20000	3200	P15	400	1	50	0061321
FDG 230V 1000W	CC-8	33000	3400	ANY	450	2	10	0061379
EME 230V 800	CC-8	20000	3200	PIS	400	2	10	9060822
FEX 230V 2000W	CC-8	50000	3200	ANY	400	3	10	0060884

CC= Coiled Coil • SC= Single Coil

## STUDIO/FILM SINGLE ENDED

Mains voltage halogen lamps with a grid filament in bi-plane for studio and film lighting applications.



CP40-FKJ 240V 1000W



CP70-FVB 240V 1000W



CP82-FRJ 240V 500W

### FEATURES

- High light output from a compact filament source
- Compact square filament design
- Colour temperature: 3200K
- Vibration proof

### APPLICATIONS

- Studio lighting
- Disco lighting
- Film lighting

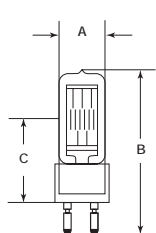


Fig. 1

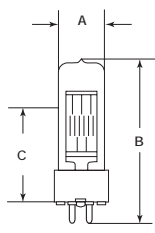


Fig. 2

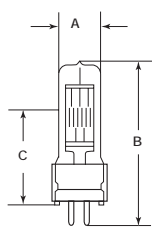


Fig. 3

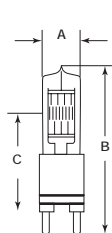


Fig. 4

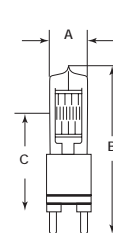


Fig. 5

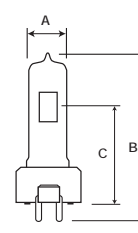


Fig. 6

Item description	ANSI	LIF	Voltage	Watt	Base	Dimensions		
						Diameter A (mm)	MOL B (mm)	LCL C (mm)
FKJ CP40 240V 1000W	FKJ	CP40/CP71	240	1000	G22	35	140	63.5
FKK CP41 240V 2000W	FKK/FKP	CP41/CP73	240	2000	G38	35	210	127.0
FTL CP43 240V 2000W	FTL	CP43/CP72	240	2000	GY16	35	145	70.0
FVB CP70 240V 1000W	FVB	CP70/CP24	240	1000	GX9.5	26	110	55.0
FEP CP77 240V 1000W	FEP	CP77	240	1000	G9.5	20	101	60.5
FSK CP81 240V 300W	FSK	CP81	240	300	GY9.5	18	90	46.3
FRJ CP82 240V 500W	FRJ	CP82	240	500	GY9.5	18	90	46.3
FRM CP89 240V 650W	FRM	CP89	240	650	GY9.5	23	90	46.5

Item description	Filament Type	Filament dimensions		Lumen Output lm	Rated Av. Life h	Burning Position	Max. Perm. pinch temp. degr.C	Figure Nr.	Packing Quantity	Ordering Code
		W mm	H mm							
FKJ CP40 240V 1000W	BP	13	15	26000	200	S90	400	1	20	9061116
FKK CP41 240V 2000W	BP	20	19	52000	400	S90	400	4	1	9061118
FTL CP43 240V 2000W	BP	20	19	52000	400	S90	400	3	20	9061119
FVB CP70 240V 1000W	BP	13	15	26000	200	S90	400	2	20	9061121
FEP CP77 240V 1000W	CC	6	23	26000	250	ANY	500	5	10	9061385
FSK CP81 240V 300W	M	8	13	7050	150	ANY	400	6	10	9061122
FRJ CP82 240V 500W	M	8	18	13500	150	ANY	400	6	10	9061124
FRM CP89 240V 650W	BP	10	10	16250	150	S90	400	6	1	9061126

**STAGE/THEATRE SINGLE ENDED**

Mains voltage single ended halogen lamps for stage and theatre.



GCJ 240V 500W



FWR 240V 1000W



FWT 240V 1200W

**FEATURES**

- Compact filament configuration resulting in more light emitted from the focal point
- Longer life than studio and film lamps

**APPLICATIONS**

- Stage and theatre
- Effect lighting

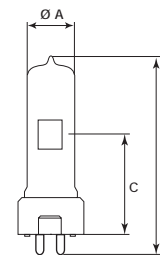


Fig. 1

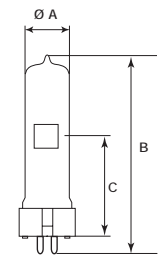


Fig. 2

Item description	ANSI	LIF	Voltage	Watt	Base	Dimensions		
						A mm	B mm	C mm
GCJ T25 240V 500W	GCJ/GCW	T25/T18	240	500	GY9.5	23	46.5	90
GCL T27 240V 650W	GCL/GCS	T27/T26	240	650	GY9.5	23	46.5	90
FWR T19 240V 1000W	FWR	T19/T11	240	1000	GX9.5	26	55	110
FWT T29 240V 1200W	FWT	T29	240	1200	GX9.5	27	67	125

Item description	Filament Type	Filament dimensions		Lumen Output lm	Rated Av.Life h	Burning Position	Max.Perm. pinch temp. degr.C	Figure Nr.	Packing Quantity	Ordering Code
		W mm	H mm							
GCJ T25 240V 500W	BP	10	10	11000	300	S90	400	1	25	9061542
GCL T27 240V 650W	BP	10	10	14500	400	S90	400	1	25	9061545
FWR T19 240V 1000W	BP	15	13	20500	750	S90	350	2	20	9061548
FWT T29 240V 1200W	BP	15	13	28600	400	S90	350	2	20	9061551

BP=Biplane

## STUDIO U-SHAPED

Mains voltage U-shaped halogen lamps mainly used in TV and photo studios.



DJE 230V 1000W



FHB 230V 1000W

### FEATURES

- U-shaped quartz halogen lamp
- Single coil construction
- Multiple filament supports
- High resistance against vibration

### APPLICATIONS

- Studio
- Film
- Photography

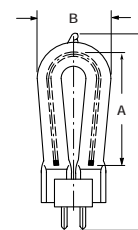


Fig. 1

Item description	ANSI	LIF	Base	Voltage	Watt	Dimensions			
						A mm	B mm	C mm	D mm
EWZ 110V 850W	EWZ		GX 6.35	110V	850W	30.0	24	65	9.5
DJE 230V 1000W	DJE		GX 6.35	230V	1000W	38.5	24	75	9.5
FHB 230V 1000W	FHB		GX 6.35	230V	1000W	30.0	24	65	9.5
FHG 230V 1250W	FHG		GX 6.35	230V	1250W	38.5	24	75	9.5
230V 1250W			GX 6.35	230V	1250W	38.5	24	75	9.5
EYN 240V 650W	EYN		GX 6.35	240V	650W	30.0	24	65	9.5
EYM 240V 1000W	EYM		GX 6.35	240V	1000W	38.5	24	75	9.5
DJC 240V 1000W	DJC		GX 6.35	240V	1000W	30.0	24	65	9.5

Item description	Lumen Output Lm	Rated Av.Life h	Colour Temperature K	Burning Position	Max.Perm. pinch temp. degr.C	Figure Nr.	Packing Quantity	Ordering Code
EWZ 110V 850W	23000	75	3300	BD +- 90°	400	1	50	0061735
DJE 230V 1000W	2600	75	3200	BD +- 90°	400	1	50	0061473
FHB 230V 1000W	33000	15	3400	BD +- 90°	400	1	50	0061391
FHG 230V 1250W	40000	15	3400	BD +- 90°	400	1	50	0061395
230V 1250W	35500	75	3200	BD +- 90°	400	1	50	0061510
EYN 240V 650W	17300	50	3300	BD +- 90°	400	1	50	0061523
EYM 240V 1000W	28300	75	3300	BD +- 90°	400	1	50	0061520
DJC 240V 1000W	3300	15	3400	BD +- 90°	400	1	50	0061458

*NOTES*

---



<i>Conventional Projection BA15s</i>	<b>28</b>
<i>Conventional Projection G17q-7/P30s</i>	<b>29</b>
<i>Exciter</i>	<b>30</b>
<i>PAR38 Coloured</i>	<b>31</b>
<i>PAR36/64</i>	<b>32</b>
<i>PAR 56 Swimming Pool</i>	<b>33</b>



## CONVENTIONAL PROJECTION BA15S (BLUE TOP)



240V 100W BA1



240V 150W BA



FWT 240V 1200W

### FEATURES

- Closely-specified colour temperatures
- Tight beam control
- Pre-focused bases allow lamp replacement without adjustment
- High resistance against vibration

### APPLICATIONS

- Theatre lighting
- Film projectors
- Slide projectors

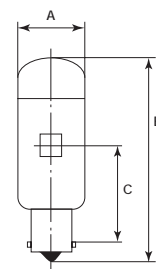


Fig. 1

Item description	ANSI	LIF	Voltage	Watt	Dimensions			Filament Type
					A mm	B mm	C mm	
BXT 12V 100W	BXT	A1/186	12V	100W	25	78	35	CF-6
CJW/CJT 230V 100W	CJW/CJT	A1/021	230V	100W	25	78	35	CC-13
CJW/CJT 240V 100W	CJW/CJT	A1/021	240V	100W	25	78	35	CC-13
CKK 230V 150W	CKK	A1/167	230V	150W	25	90	35	CC-13
CKK 240V 150W	CKK	A1/167	240V	150W	25	90	35	CC-13
CNP 230V 300W	CNP	A1/037	230V	300W	27	105	35	CC-13
BEL 240V 300W	BEL	A1/183	240V	300W	29.5	81	35	CC-13

Item description	Base	Approx. Lumens lm	Colour Temp. K	Rated Av. Life h	Burning Position	Figure Nr.	Packing Quantity	Ordering Code
BXT 12V 100W	Ba15s	2800	3250	25	BD	1	25	9061663
CJW/CJT 230V 100W	Ba15s	1500	2870	50	BD	1	25	9061619
CJW/CJT 240V 100W	Ba15s	1500	2870	50	BD	1	25	9060629
CKK 230V 150W	Ba15s	2700	2920	50	BD	1	25	9061646
CKK 240V 150W	Ba15s	2700	2920	50	BD	1	25	9061051
CNP 230V 300W	Ba15s	6600	3050	25	BD	1	25	9060623
BEL 240V 300W	Ba15s	6600	3050	25	BD	1	25	9060560

CONVENTIONAL PROJECTION G17Q-7/P30S



CSF 240V 300W



8V 50W

FEATURES

- Closely-specified colour temperatures
- Tight beam control
- Pre-focused bases allow lamp replacement without adjustment
- High resistance against vibration

APPLICATIONS

- Theatre lighting
- Film projectors
- Slide projectors

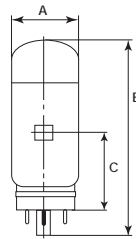


Fig. 1

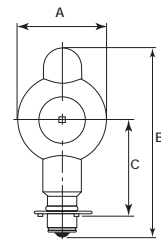


Fig. 2

Item description	ANSI	LIF	Voltage	Watt	Base	Dimensions			Filament Type
						A mm	B mm	C mm	
CYN 24V 150W	CYN	A1/212	24	150	GY17q-7	32	103	39.7	CF-6
CTD 230V 150W	CTD	A1/182	230	150	G17q-7	28.5	79	33.4	CC-13
CTD 240V 150W	CTD	A1/182	240	150	G17q-7	28.5	79	33.4	CC-13
CSF 230V 300W	CSF	A1/178	230	300	G17q-7	32	103	39.7	CC-13
CSF 240V 300W	CSF	A1/178	240	300	G17q-7	32	103	39.7	CC-13
CXR/CXL 8V 50W	CXR/CXL	A1/017	8	50	P30s	43	96	47.0	C-6

Item description	Approx. Lumens lm	Colour Temp. K	Rated Av. Life h	Burning Position	Figure Nr.	Packing Quantity	Ordering Code
CYN 24V 150W	4350	3300	25	BD	1	25	9061676
CTD 230V 150W	3000	3000	25	BD	1	25	9061656
CTD 240V 150W	3000	3000	25	BD	1	25	9060633
CSF 230V 300W	6600	3050	25	BD	1	25	9061652
CSF 240V 300W	6600	3050	25	BD	1	25	9061052
CXR/CXL 8V 50W	36	3200	25	BD	2	25	9061617

BD=Base Down

## EXCITER



BRS 4V 075A

### FEATURES

- Closely-specified colour temperatures
- Tight beam control
- Pre-focused bases allow lamp replacement without adjustment
- High resistance against vibration

### APPLICATIONS

- Films projectors

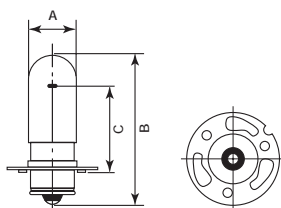


Fig. 1

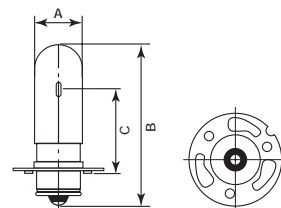


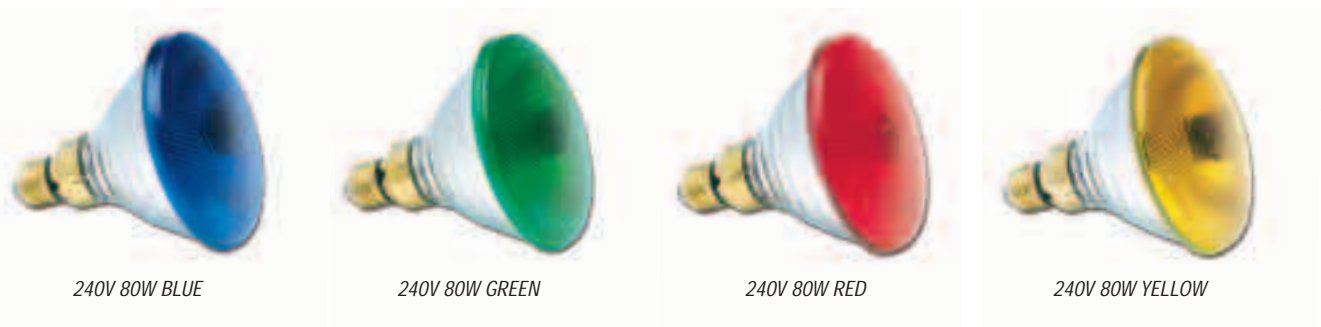
Fig. 2

Item description	ANSI	LIF	Voltage	Base	Dimensions			Filament Type
					A mm	B mm	C mm	
BRS 4V 0,75A	BRS	G29	4	P30s	16	50	28.5	C-6
BRK 4V 0,75A	BRK	G27	4	P30s	16	60	28.5	C-8
BSK 6V 1A	BSK	G40	6	P30s	16	50	28.5	C-6
BSS 6V 1A	BSS/BSB	G5	6	P30s	16	55	28.5	C-8

Item description	Approx. Lumens lm	Rated Av. Life h	Burning Position	Figure Nr.	Packing Quantity	Ordering Code
BRS 4V 0,75A	30	50	any	1	12	9060575
BRK 4V 0,75A	30	50	any	2	12	9060571
BSK 6V 1A	70	100	any	1	12	9060579
BSS 6V 1A	70	100	any	2	24	9060551

**PAR38 COLOURED**

*Incandescent PAR lamps with integral parabolic reflector and coloured front lens.*



**FEATURES**

- Parabolic-shaped reflector made from hard glass
- Coloured front lens
- Choice of four colours: Blue, Green Red, and Yellow
- E27 cap

**APPLICATIONS**

- Mainly used in commercial accent lighting
- To create special effects in bars, clubs and discos and in shop window displays

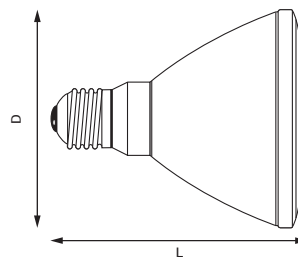


Fig. 1

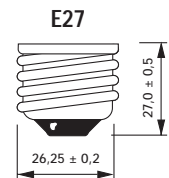


Fig. 2

Item description	Watt	Volt	Cap	Dimensions (mm)		Packing Quantity	Ordering Code
				L	D		
80W/FL30°PAR38 blue	80	240	E27	136	124	15	0019650
80W/FL30°PAR38 green	80	240	E27	136	124	15	0019651
80W/FL30°PAR38 red	80	240	E27	136	124	15	0019652
80W/FL30°PAR38 yellow	80	240	E27	136	124	15	0019653

## PAR 36/64



PAR36 6V 30W



PAR64 240V 1000W Spot

### FEATURES

- Pressed –glass reflector lamps
- Extremely powerful beam (PAR64)
- High illuminance levels

### APPLICATIONS

- Theatre lighting
- Displays
- Museums
- Churches
- Towers
- Exhibitions
- Gardens
- Disco's

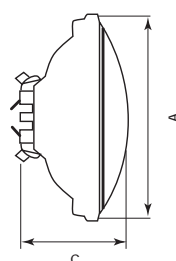


Fig. 1

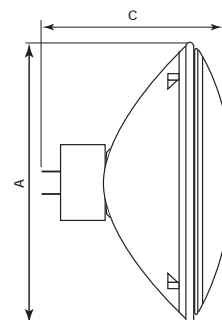


Fig. 2

Item description	ANSI	LIF	Voltage	Watt	Beam type	Approx. Beam Spread		Base
						10% Peak CD	50% Peak CD	
PAR 36 6V 30W			6	30	Spot	5x5		Screw Terminal
PAR 36 12,8V 30W			12.8	30	Spot	5x5		Screw Terminal
PAR 64 1000W NSP	EXC	CP60	240	1000	Narrow Spot	20x17	12x6	GX16d
PAR 64 1000W SP	EXD	CP61	240	1000	Spot	23x20	13x10	GX16d
PAR 64 1000W FL	EXE	CP62	240	1000	Medium Flood	39x24	25x14	GX16d

Item description	Dimensions		Peak Intensity cd	Colour temp. K	Rated Av.Life h	Burning Position	Figure Nr.	Packing Quantity	Ordering Code
	A Diameter mm	C MOL mm							
PAR 36 6V 30W	114	70	55000	3200	35	Any	1	12	9061531
PAR 36 12,8V 30W	114	70	50000	3200	35	Any	1	12	9020167
PAR 64 1000W NSP	204	152.4	400000	3200	300	Any	2	6	9061109
PAR 64 1000W SP	204	152.4	275000	3200	300	Any	2	6	9061127
PAR 64 1000W FL	204	152.4	130000	3200	300	Any	2	6	9061128

**PAR 56 SWIMMING POOL**



PAR56 12V 300W Swimming Pool

**FEATURES**

- Low voltage (12V) for safety reasons
- Heat resistant glass
- Sturdily constructed lamp absorbs mechanical shocks
- Wide beam

**APPLICATIONS**

- Swimming Pools
- Fountains

**DIRECTIONS FOR USE**

- High running current (25A)

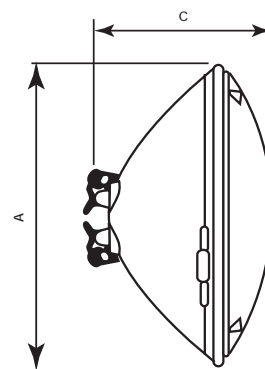
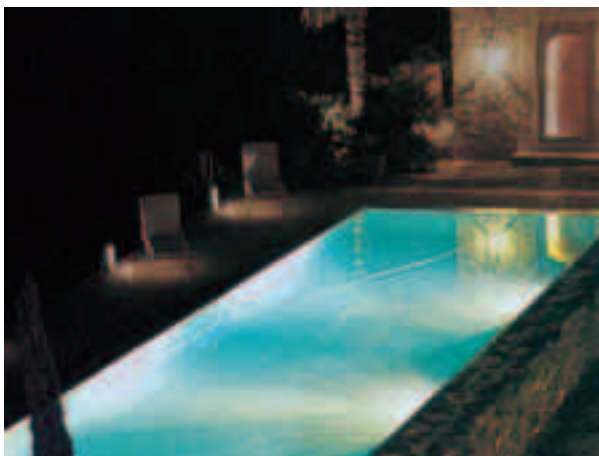


Fig. 1

Item description	ANSI	LIF	Voltage	Watt	Approx. Beam Spread Hor. x Vert. Degrees	Base
------------------	------	-----	---------	------	--	------

PAR 56 12V 300W Swimming Pool			12	300	50 x 25	Screw
----------------------------------	--	--	----	-----	---------	-------

Item description	Dimensions		Peak Intensity cd	Colour temp. K	Rated Av. Life h	Burning Position	Figure Nr.	Packing Quantity	Ordering Code
	A Diameter mm	C MOL mm							

PAR 56 12V 300W Swimming Pool	178	114	12000	2850	1000	S45	1	12	9061532
----------------------------------	-----	-----	-------	------	------	-----	---	----	---------

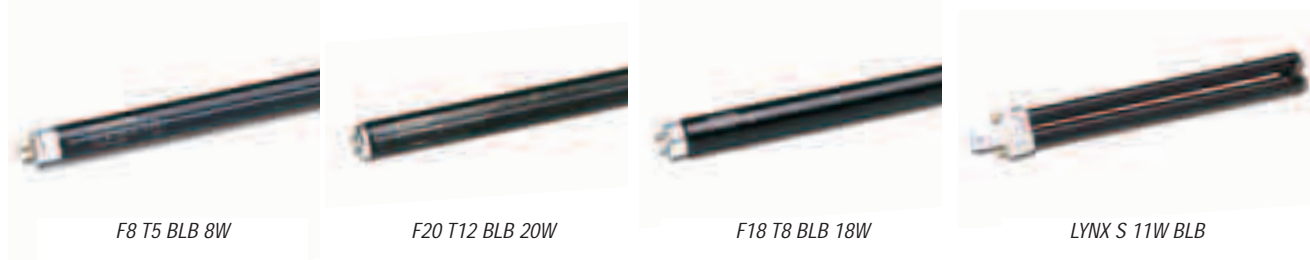
*Blacklight Blue Lamps* 36

*T8 Coloured* 37



## BLACKLIGHT BLUE LAMPS

Blacklight Blue lamps differ from standard fluorescent lamps only in the type and composition of phosphor used. The bulb is made of special dark-blue filter glass that absorbs practically all of the visible light, yet freely transmits the ultraviolet radiation. Fixture requirements are simple since the lamp is a completely self-contained blacklight unit.

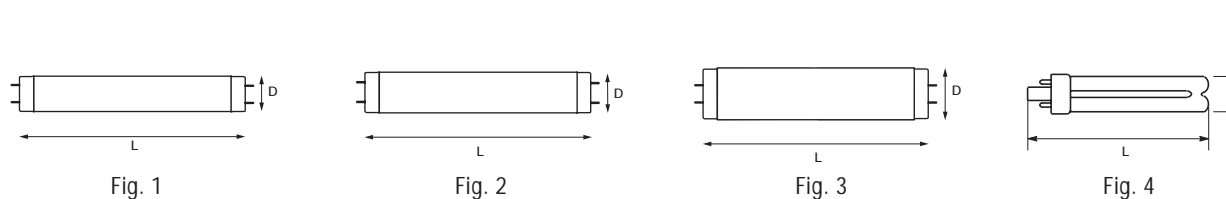
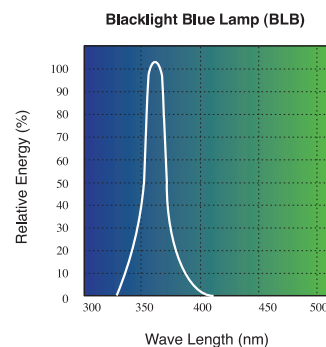


### FEATURES

- The lamps efficiently emit near ultraviolet radiation at 315nm-400nm with strong photochemical and fluorescent effects
- The special deep blue filter glass absorbs visible rays and transmits near (UV-A) ultraviolet rays only
- Shape, electrical characteristics and lighting circuits similar to general fluorescent lamps

### APPLICATIONS

- Special effects
- Counterfeit detection in philately, bank notes, papers, etc.
- Leak and crack detection
- Excitation of fluorescent paints in dark rooms
- Revealing fluorescence of drawings on textiles
- Geological investigation of stones and rocks

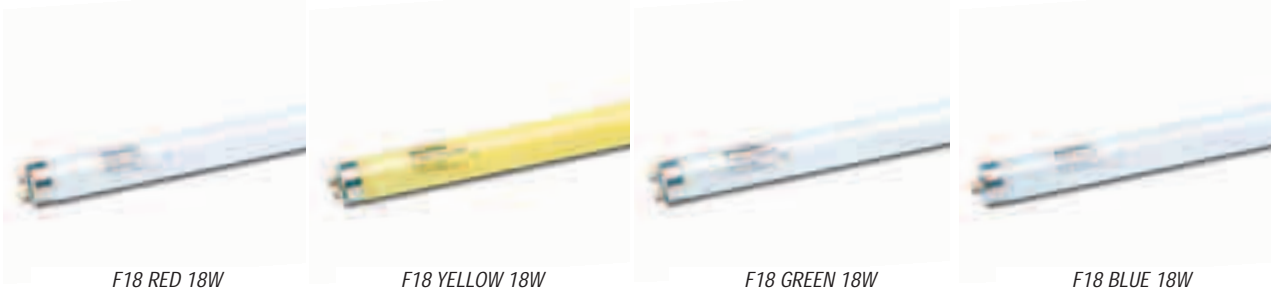


Item description	Watt W	Voltage V	Current A	Spectral Peak	Cap	Dimensions (mm) L D	Figure Nr.	Packing Quantity	Ordering Code
F4 T5 BLB	4	29	0.170	368	G5	134.5 15.5	1	50	0000008
F6 T5 BLB	6	42	0.160	368	G5	210.5 15.5	1	50	0000018
F8 T5 BLB	8	56	0.145	368	G5	287 15.5	1	50	0000024
F15 T8 BLB	15	55	0.340	368	G13	436 25.5	2	25	0000077
F18 T8 BLB	18	57	0.360	368	G13	590 26	2	12	0000698
F30 T8 BLB	30	96	0.360	368	G13	895 26	2	20	0000158
F36 T8 BLB	36	100	0.440	368	G13	1200 26	2	12	0000699
F20 T12 BLB	20	57		356	G13	609.6 38.1	3	6	9000358
LYNX-S 9W BLB	9		0.180	368	G23	145 28	4	50	0025053
LYNX-S 11W BLB	11		0.155	368	G23	215 28	4	50	0025052



**T8 COLOURED**

Standard halophosphor tubes with a coloured coating for special colour effects.

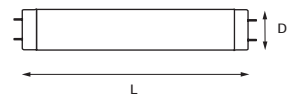


**FEATURES**

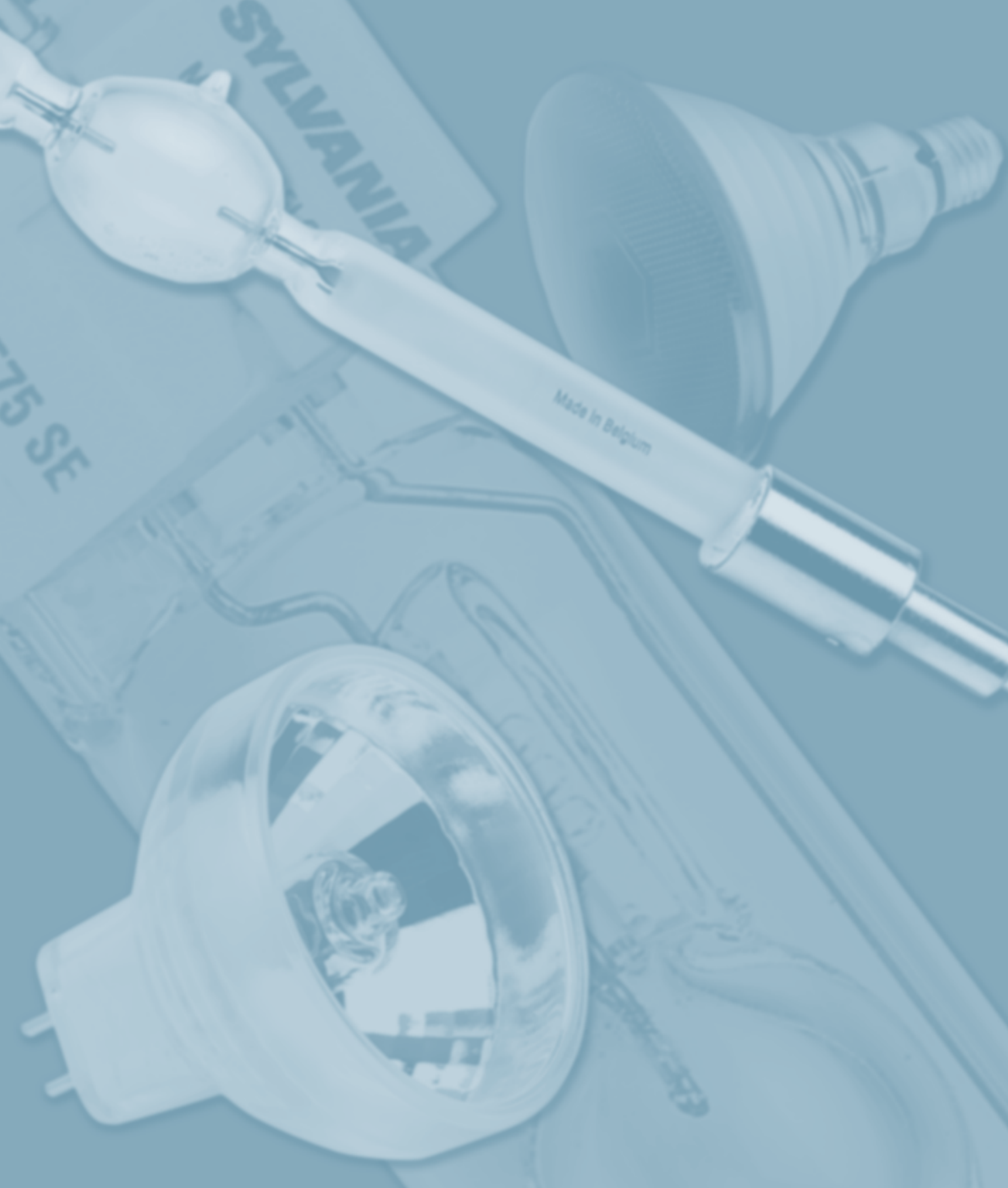
- High quality fluorescent tubes
- Long life
- Available in four colours: Blue, Green, Red and Yellow

**APPLICATIONS**

- To create special lighting effects in shop windows, bars, fairground attractions, dance halls and discotheques



Item description	Watt	Colour	Cap	Dimensions (mm)		Packing Quantity	Ordering Code
				L	D		
F18W/T8/R	18	Red	G13	590	26	25	0002560
F18W/T8/Y	18	Yellow	G13	590	26	25	0002561
F18W/T8/G	18	Green	G13	590	26	25	0002562
F18W/T8/B	18	Blue	G13	590	26	25	0002563
F36W/T8/R	36	Red	G13	1200	26	25	0002564
F36W/T8/Y	36	Yellow	G13	1200	26	25	0002565
F36W/T8/G	36	Green	G13	1200	26	25	0002566
F36W/T8/B	36	Blue	G13	1200	26	25	0002567



*Incandescent & Halogen Cross Reference: ANSI-Sylvania* 40

*Incandescent & Halogen Cross Reference: LIF-Sylvania* 41

*Incandescent & Halogen Cross Reference: Philips-Sylvania* 42

*Incandescent & Halogen Cross Reference: Osram-Sylvania* 43

*BriteArc Cross Reference* 44

*Base Types Incandescent & Halogen* 45

*Base Types BriteArc* 46

*Base Types Fluorescent / Base Types Compact Fluorescent* 47

*Filament types* 48

*Burning positions* 49

*Index Sylvania Code* 50

# INCANDESCENT & HALOGEN CROSS REFERENCE: ANSI-SYLVANIA

Appendix  
40

ANSI Code	SYLVANIA CODE	Page
BEL	9060560	28
BRK	9060571	30
BRS	9060575	30
BSK	9060579	30
BSS/BSB	9060551	30
BVA	9061306	20
BXT	9061663	28
CJW/CJT 230V	9061619	28
CJW/CJT 240V	9060629	28
CKK 230V	9061646	28
CKK 240V	9061051	28
CNP	9060623	28
CSF 230V	9061652	29
CSF 240V	9061052	29
CTD 230V	9061656	29
CTD 240V	9060633	29
CXR/CXL	9061617	29
CYN	9061676	29
DDL	9060984	15-16
DDM	9060954	15-16
DDS	9060668	15-16
DED	9060967	15-16
DJC	0061458	24
DJE	0061473	24
DNF	9060743	18
DXX	0061321	21
DYS/DYV	9060779	20
EFM	0061341	14
EFN	0061342	14
EFP	0061344	14
EFR	0061350	14
EHJ	0061367	19
EJA	9060921	15-16
EJL	0061011	15-16
EJM	9061181	15-16
EJV	9060833	15-16
EKE	9060943	15-16
ELC	0061740	15-16
ELC/5H	0061741	15-16
ELD	9060957	15-16
ELH	9060813	17
EME	9060822	21
EMM/EKS	9060918	18
ENG	9061183	17
ENH	9060940	17

ANSI Code	SYLVANIA CODE	Page
ENX	9060846	17
EPS	9060927	20
ESD	9061358	17
ESY	9060962	20
EVB/BRJ	0061303	19
EVD	9060826	19
EVW	9000017	17
EWf	9060890	15-16
EWX	0061494	19
EWZ	0061735	24
EXC	9061109	32
EXD	9061127	32
EXE	9061128	32
EXR	9061039	15-16
EXY	9061182	15-16
EYM	0061520	24
EYN	0061523	24
FAD	0061371	21
FCR	0061373	19
FCS	0061374	19
FDG	0061379	21
FDS/FDT	9060924	19
FEP	9061385	22
FEX	0060884	21
FGX	0061465	19
FHB	0061391	24
FHG	0061395	24
FHS	9060850	15-16
FKJ	9061116	22
FKK/FKP	9061118	22
FLT	9060877	18
FLW	9061142	19
FNT	9061150	19
FRJ	9061124	22
FRM	9061126	22
FSK	9061122	22
FSY	9060889	20
FTL	9061119	22
FVB	9061121	22
FWR	9061548	23
FWT	9061551	23
FXL	9061768	17
GCJ /GCW	9061542	23
GCL/GCS	9061545	23
JCR	9061063	17

ANSI=American National Standards Institute

# INCANDESCENT & HALOGEN CROSS REFERENCE: LIF-SYLVANIA

LIF Code	SYLVANIA CODE	Page
A1/017	9061617	29
A1/021 230V	9061619	28
A1/021 240V	9060629	28
A1/037	9060623	28
A1/167 230V	9061646	28
A1/167 240V	9061051	28
A1/178 230V	9061652	29
A1/178 240V	9061052	29
A1/182 230V	9061656	29
A1/182 240V	9060633	29
A1/183	9060560	28
A1/186	9061663	28
A1/212	9061676	29
A1/215	0061373	19
A1/216	0061374	19
A1/223	0061367	19
A1/229	0061341	14
A1/230	0061342	14
A1/231	0061344	14
A1/232	0061350	14
A1/234	0061303	19
A1/239	9060826	19
A1/252	0061011	15-16
A1/258	9060918	18
A1/259	0061740	15-16
A1/262	9060924	19
A1/264	9060779	20

LIF Code	SYLVANIA CODE	Page
A1/266	9060743	18
A1/268	9060927	20
CP40/CP71	9061116	22
CP41/CP73	9061118	22
CP43/CP72	9061119	22
CP60	9061109	32
CP61	9061127	32
CP62	9061128	32
CP70/CP24	9061121	22
CP77	9061385	22
CP81	9061122	22
CP82	9061124	22
CP89	9061126	22
G27	9060571	30
G29	9060575	30
G40	9060579	30
G5	9060551	30
M33	0061465	19
P1/12	0061379	21
P2/11	9060822	21
P2/13	0061321	21
P2/27	0060884	21
P2/6	0061371	21
T19/T11	9061548	23
T25/T18	9061542	23
T27/T26	9061545	23
T29	9061551	23

LIF=Lighting Industry Federation (UK)

# INCANDESCENT & HALOGEN CROSS REFERENCE: PHILIPS-SYLVANIA

PHILIPS	SYLVANIA	ANSI	PAGE
5995	9061181	EJM	15-16
6423	0061350	EFR	14
6550	0061303	EVB/BRJ	19
6834	0061344	EFP	14
6847	0061341	EFM	14
6853	0061342	EFN	14
6958	0061465	FGX	19
7023	0061373	FCR	19
13095	9060940	ENH	17
13158	9060957	ELD	15-16
13160	9060668	DDS	15-16
13164	0061011	EJL	15-16
13194	9060967	DED	15-16
13629	9060943	EKE	15-16
13630	9060890	EWF	15-16
13632	9061182	EXY	15-16
13634	9060850	FHS	15-16
13700	9061150	FNT	19
13824	9060846	ENX	17
13830	9000017	EVW	17
14501	9060984	DDL	15-16
14502	9061039	EXR	15-16
14526	9061768	FXL	17
14527	9060921	EJA	15-16
14529	9060743	DNF	18
14530	9061142	FLW	19
13120C	9061617	CXR/CXL	29
13162R	0061321	DXX	21
13477R	9060822	EME	21
6365R	0061371	FAD	21
6638P	9061126	FRM	22
6820P	9061542	GCJ/GCW	23
6823P	9061545	GCL/GCS	23
6872P	9061122	FSK	22
6873P	9061124	FRJ	22
6897P	9061551	FWT	23
6983P	9061385	FEP	22
6994Z	9061118	FKK/FKP	22
6995Z	9061116	FKJ	22
6996P	9061548	FWR	23
7158 XHP	0061374	FCS	19
7238N/05	9061663	BXT	28
7748S	0061367	EHJ	19
7787 XHP	9060826	EVD	19
PF801R	0061379	FDG	21

# INCANDESCENT & HALOGEN CROSS REFERENCE: OSRAM-SYLVANIA

OSRAM	SYLVANIA	ANSI	PAGE
54440	9060877	FLT	18
54574	0061371	FAD	21
54660	9060984	DDL	15-16
54730	0061011	EJL	15-16
54737	9060954	DDM	15-16
54745	9060957	ELD	15-16
54747	9061181	EJM	15-16
54753	9060921	EJA	15-16
54944	9060668	DDS	15-16
54957	9061183	ENG	17
54960	9060918	EMM/EKS	18
54977	9060927	EPS	20
64571	0061321	DXX	21
64607	0061341	EFM	14
64618	9060967	DED	15-16
64643	9060924	FDS/FDT	19
64670	9061542	GCJ	23
64745	9061121	FVB	22
64747	9061116	FKJ	22
64781	0060884	FEX	21
64788	9061119	FTL	22
64789	9061118	FKK	22
93505	9000017	EVW	17
93506	9060940	ENH	17
93510	9061182	EXY	15-16
93515	9061039	EXR	15-16
93518	9060813	ELH	17
93520	9060850	FHS	15-16
93525	9060846	ENX	17
93526	9061768	FXL	17
93531	9060779	DYS/DYV	20
93591	9060889	FSY	20
93631	9060743	DNF	18
93637	9060833	EJV	15-16
93638	9060943	EKE	15-16
93734	9061385	FEP	22
64615HLX	0061342	EFN	14
64625HLX	0061373	FCR	19
64627HLX	0061344	EFP	14
64633HLX	0061303	EVB/BRJ	19
64634HLX	0061350	EFR	14
64640HLX	0061374	FCS	19
64653HLX	0061740	ELC	15-16
64655HLX	0061367	EHJ	19
64656HLX	9061150	FNT	19
64663HLX	9060826	EVD	19
64737/3	9061109	EXC	32
64738/3	9061127	EXD	32
64739/3	9061128	EXE	32

# BRITEARC CROSS REFERENCE

Ordering Code	Sylvania	Philips	Osram	Ushio	GE Lighting	Radium
<b>BA SE NHR</b>						
0023987	BA 150 SE NHR	-	-	-	-	-
0023958	BA 400 SE NHR	MSR 400	HSR 400/60	USR-400 NHR	-	RSR 400W
0023960	BA 575 SE NHR	-	HSR 575/60	USR-575 GX9.5	-	RSR 575W
0023961	BA 700 SE NHR	MSR 700	HSR 700/60	USR-700 NHR	-	RSR 700W
0023935	BA 1200 SE NHR	MSR 1200	HSR 1200/60	USR-1200 SE G22	-	RSR 1200W
<b>BA SE D (LONG LIFE)</b>						
0023984	BA 150 SE D	-	HSD 150/70	-	-	-
7220168	BA 200 SE D	MSD 200	HSD 200/60	USD-200 NHR	-	RSD 200W
7220169	BA 250 SE D	MSD 250	HSD 250/60	USD-250 NHR	-	RSD 250W/60
0023981	BA 575 SE D	MSD 575	HSD 575/72	USD-575 NHR	-	RSD 575W
<b>BA SE /2 (HIGH COLOUR TEMPERATURE)</b>						
0023998	BA 250/2 SE D 8.5	MSD 250/2	HSD 250/78	USD-250/2 NHR	CSD 250/2/SE	RSD 250W/78
0024002	BA 575/2 SE NHR 7.2	MSR 575/2	HSR 575/72	USD-575/2 NHR	CSR 575/2/SE	RSR 575W/72
0024000	BA 575/2 SE NHR 8.5	-	-	-	-	-
<b>BA SE HR (HOT RESTRIKE)</b>						
0023941	BA 200 SE HR	MSR 200 HR	HMI 200W/SE	-	CSR 200/SE/HR	RSI 200W/SE
0023883	BA 400 SE HR	MSR 400 HR	HMI 400W/SE	-	-	RSI 400W/SE
0023932	BA 575 SE HR	MSR 575 HR	HMI 575W/SE	USR-575 BE SE	CSR 575/SE/HR	RSI 575W/SE
0023992	BA 800 SE HR	-	-	-	-	-
0023933	BA 1200 SE HR	MSR 1200 HR	HMI 1200 SE	USR-1200 SE G38	CSR 1200/SE/HR	RSI 1200W/SE
0023934	BA 2500 SE HR	MSR 2500 HR	HMI 2500 SE	USR-2500 SE	CSR 2500/SE/HR	RSI 2500W/SE
<b>BA DE (DOUBLE ENDED)</b>						
0023921	BA 575 DE	MSI 575W	HMI 575W/GS	UMI-575	CSR 575/DE	RSI 575W
0023922	BA 1200 DE	MSI 1200W	HMI 1200W GS	UMI-1200	CSR 1200/DE	RSI 1200W
0023996	BA 1200 DE S	MSI 1200W/S	HTI 1200W/D7/60	-	CSR 1200S/DE	-
0023923	BA 2500 DE	MSI 2500W	HMI 2500W GS	UMI-2500	CSR 2500/DE	RSI 2500W
0023924	BA 4000 DE	MSI 4000W	HMI 4000W	UMI-4000	CSR 4000/DE	RSI 4000W
0023925	BA 6000 DE	MSI 6000W	HMI 6000W	UMI-6000	CSR 6000/DE	RSI 6000W
0023927	BA 12000 DE	MSI 12000W	HMI 12000W/GS	UMI-12000	CSR 12000/DE	RSI 12000W/230
<b>BA SE SA (SHORT ARC)</b>						
0023965	BA 600 SE SA	-	HTI 600 W/SE	-	-	-
0024003	BA 700 SE SA	MSR 700 SA	HTI 705 W/SE	-	CSR 700SA	-
0023966	BA 600 DE SA	-	HTI 600 W/D	-	-	-

# BASE TYPES INCANDESCENT & HALOGEN

BA15s



E27



GZ4



GX5.3



GY5.3



G6.35<sup>-13</sup><sub>-15</sub><sup>-20</sup>



GY6.35<sup>-13</sup><sub>-15</sub><sup>-20</sup>



GX6.35



GZ6.35



GX7.9



G9.5



GY5.3



GX9.5



GY16



GX16d



G17t-7



G17q-7



GX17q-7



GY17q-7



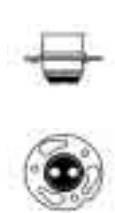
G22



G38



P30s-10.3



R7s



RX7s



2 screw  
Terminals





# BASE TYPES BRITEARC

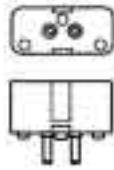
FaX1.5-3x1



GZY9.5(GZZ9.5)



GX9.5



GY9.5



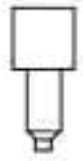
G22



G38



SFa21-12



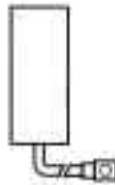
SFc10-4



SFc-15.5-6

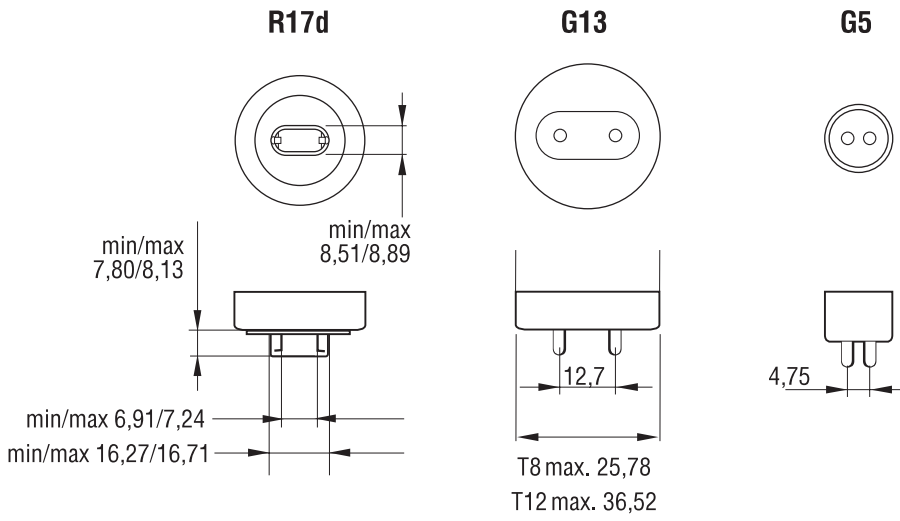


S25.5 x60

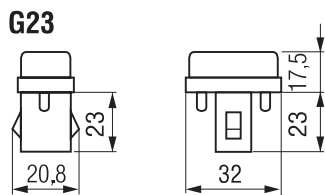
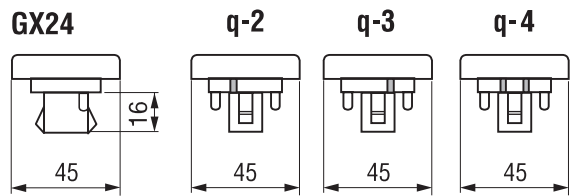
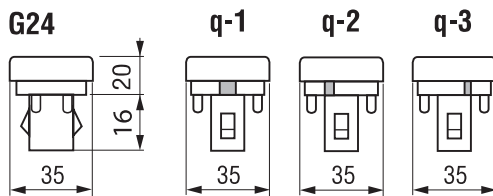
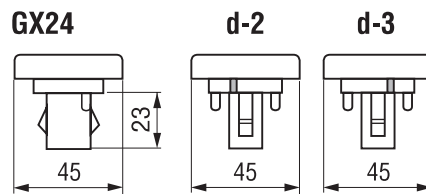
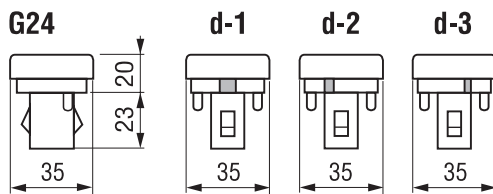
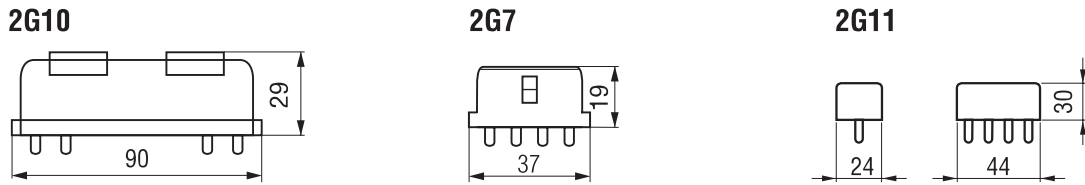


S30 x70



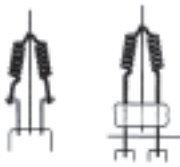


BASE TYPES COMPACT FLUORESCENT



# FILAMENT TYPES

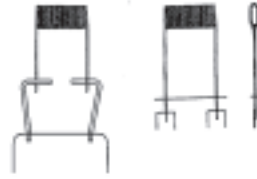
C-2V, CC-2V



C-6, CC-6



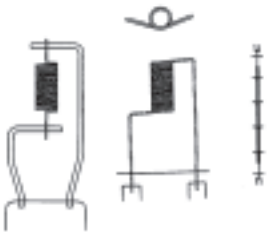
CBar6 (CF-6)



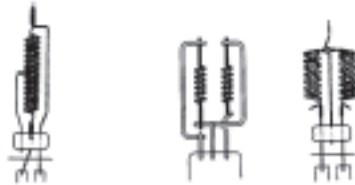
CBar8 (CF-9)



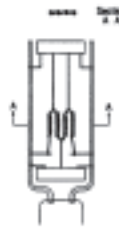
C-8, CC-8



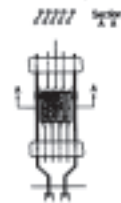
2CC-8



C-13, CC-13



C-13D, CC-13D



C: single Coil  
CC: Double Coil (Coiled Coil)  
C BAR: Flat Coil

Symbols

S = BASE DOWN

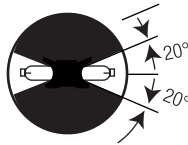
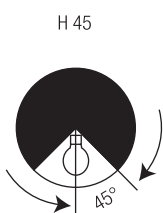
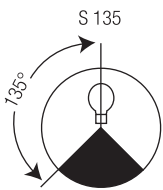
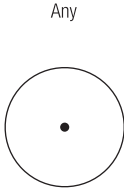
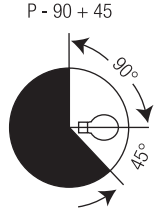
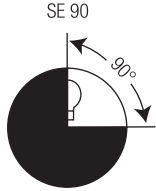
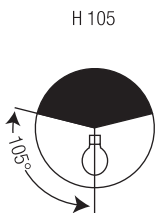
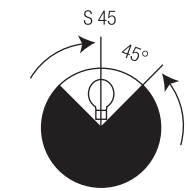
H = BASE UP  
(hanging)

SE = BASE DOWN  
and one direction of rotation

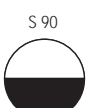
P = HORIZONTAL

ANY

Example



Different symbols used for Projection, Photo, Studio, Theatre, TV and Disco lamps



	Allowed
	Not allowed

Code	Reference	Section	Page
0000008	F4 T5 BLB	Photo Optic Fluorescent Lamps	36
0000018	F6 T5 BLB	Photo Optic Fluorescent Lamps	36
0000024	F8 T5 BLB	Photo Optic Fluorescent Lamps	36
0000077	F15 T8 BLB	Photo Optic Fluorescent Lamps	36
0000158	F30 T8 BLB	Photo Optic Fluorescent Lamps	36
0000698	F18 T8 BLB	Photo Optic Fluorescent Lamps	36
0000699	F36 T8 BLB	Photo Optic Fluorescent Lamps	36
0002560	F18W/T8/R	Photo Optic Fluorescent Lamps	37
0002561	F18W/T8/Y	Photo Optic Fluorescent Lamps	37
0002562	F18W/T8/G	Photo Optic Fluorescent Lamps	37
0002563	F18W/T8/B	Photo Optic Fluorescent Lamps	37
0002564	F36W/T8/R	Photo Optic Fluorescent Lamps	37
0002565	F36W/T8/Y	Photo Optic Fluorescent Lamps	37
0002566	F36W/T8/G	Photo Optic Fluorescent Lamps	37
0002567	F36W/T8/B	Photo Optic Fluorescent Lamps	37
0019650	80W/FL30°PAR38 blue	Photo Optic Incandescent Lamps	31
0019651	80W/FL30°PAR38 green	Photo Optic Incandescent Lamps	31
0019652	80W/FL30°PAR38 red	Photo Optic Incandescent Lamps	31
0019653	80W/FL30°PAR38 yellow	Photo Optic Incandescent Lamps	31
0023883	BA 400 SE HR	Photo Optic Discharge Lamps	8
0023921	BA 575 DE	Photo Optic Discharge Lamps	9
0023922	BA 1200 DE	Photo Optic Discharge Lamps	9
0023923	BA 2500 DE	Photo Optic Discharge Lamps	9
0023924	BA 4000 DE	Photo Optic Discharge Lamps	9
0023925	BA 6000 DE	Photo Optic Discharge Lamps	9
0023927	BA 12000 DE	Photo Optic Discharge Lamps	9
0023932	BA 575 SE HR	Photo Optic Discharge Lamps	8
0023933	BA 1200 SE HR	Photo Optic Discharge Lamps	8
0023934	BA 2500 SE HR	Photo Optic Discharge Lamps	8
0023935	BA 1200 SE NHR	Photo Optic Discharge Lamps	6
0023941	BA 200 SE HR	Photo Optic Discharge Lamps	8
0023958	BA 400 SE NHR	Photo Optic Discharge Lamps	6
0023960	BA 575 SE NHR	Photo Optic Discharge Lamps	6
0023961	BA 700 SE NHR	Photo Optic Discharge Lamps	6
0023965	BA 600 SE SA	Photo Optic Discharge Lamps	10
0023966	BA 600 DE SA	Photo Optic Discharge Lamps	10
0023976	BA 150 SE D	Photo Optic Discharge Lamps	6
0023981	BA 575 SE D	Photo Optic Discharge Lamps	6
0023987	BA 150 SE NHR	Photo Optic Discharge Lamps	6
0023992	BA 800 SE HR	Photo Optic Discharge Lamps	8
0023996	BA 1200 DE S	Photo Optic Discharge Lamps	9
0023998	BA 250/2 SE D 8.5	Photo Optic Discharge Lamps	7
0024000	BA 575/2 SE NHR 8.5	Photo Optic Discharge Lamps	7
0024002	BA 575/2 SE NHR 7.2	Photo Optic Discharge Lamps	7
0024003	BA 700 SE SA	Photo Optic Discharge Lamps	10
0025052	LYNX-S 11W BLB	Photo Optic Fluorescent Lamps	36
0025053	LYNX-S 9W BLB	Photo Optic Fluorescent Lamps	36
0060884	FEX 230V 2000W	Photo Optic Halogen Lamps	21
0061011	EJL 24V 200W	Photo Optic Halogen Lamps	15
0061303	EVB/BRJ 15V 150W	Photo Optic Halogen Lamps	19
0061321	DXX 240V 800W	Photo Optic Halogen Lamps	21
0061341	EFM 8V 50W	Photo Optic Halogen Lamps	14

Code	Reference	Section	Page
0061342	EFN 12V 75W	Photo Optic Halogen Lamps	14
0061344	EFP 12V 100W	Photo Optic Halogen Lamps	14
0061350	EFR 15V 150W	Photo Optic Halogen Lamps	14
0061367	EHJ 24V 250W	Photo Optic Halogen Lamps	19
0061371	FAD 118V 650W	Photo Optic Halogen Lamps	21
0061373	FCR 12V 100W	Photo Optic Halogen Lamps	19
0061374	FCS 24V 150W	Photo Optic Halogen Lamps	19
0061379	FDG 230V 1000W	Photo Optic Halogen Lamps	21
0061391	FHB 230V 1000W	Photo Optic Halogen Lamps	24
0061395	FHG 230V 1250W	Photo Optic Halogen Lamps	24
0061458	DJC 240V 1000W	Photo Optic Halogen Lamps	24
0061465	FGX 24V 250W	Photo Optic Halogen Lamps	19
0061473	DJE 230V 1000W	Photo Optic Halogen Lamps	24
0061494	EWX 24V 250W	Photo Optic Halogen Lamps	19
0061510	230V 1250W	Photo Optic Halogen Lamps	24
0061520	EYM 240V 1000W	Photo Optic Halogen Lamps	24
0061523	EYN 240V 650W	Photo Optic Halogen Lamps	24
0061735	EWZ 110V 850W	Photo Optic Halogen Lamps	24
0061740	ELC 24V 250W	Photo Optic Halogen Lamps	15
0061741	ELC 24V 250W 500H	Photo Optic Halogen Lamps	15
7220168	BA 200 SE D	Photo Optic Discharge Lamps	6
7220169	BA 250 SE D	Photo Optic Discharge Lamps	6
9000017	EVW 82V 250W	Photo Optic Halogen Lamps	17
9000358	F20 T12 BLB	Photo Optic Fluorescent Lamps	36
9020167	PAR 36 12,8V 30W	Photo Optic Incandescent Lamps	32
9023475	XG 147 100V 1500W	Photo Optic Discharge Lamps	11
9060551	BSS 6V 1A	Photo Optic Incandescent Lamps	30
9060560	BEL 240V 300W	Photo Optic Incandescent Lamps	28
9060571	BRK 4V 0,75A	Photo Optic Incandescent Lamps	30
9060575	BRS 4V 0,75A	Photo Optic Incandescent Lamps	30
9060579	BSK 6V 1A	Photo Optic Incandescent Lamps	30
9060623	CNP 230V 300W	Photo Optic Incandescent Lamps	28
9060629	CJW/CJT 240V 100W	Photo Optic Incandescent Lamps	28
9060633	CTD 240V 150W	Photo Optic Incandescent Lamps	29
9060668	DDS 21V 80W	Photo Optic Halogen Lamps	15
9060743	DNF 21V 150W	Photo Optic Halogen Lamps	18
9060779	DYS/DYV 120V 600W	Photo Optic Halogen Lamps	20
9060813	ELH 120V 300W	Photo Optic Halogen Lamps	17
9060822	EME 230V 800	Photo Optic Halogen Lamps	21
9060826	EVD 36V 400W	Photo Optic Halogen Lamps	19
9060833	EJV 21V 150W	Photo Optic Halogen Lamps	15
9060846	ENX 82V 360W	Photo Optic Halogen Lamps	17
9060850	FHS 82V 300W	Photo Optic Halogen Lamps	15
9060877	FLT 13.8V 25W/S	Photo Optic Halogen Lamps	18
9060889	FSY 240V 400W	Photo Optic Halogen Lamps	20
9060890	EFW 24V 200W	Photo Optic Halogen Lamps	15
9060918	EMM/EKS 24V 250W	Photo Optic Halogen Lamps	18
9060921	EJA 21V 150W	Photo Optic Halogen Lamps	15
9060924	FDS/FDT 24V 150W	Photo Optic Halogen Lamps	19
9060927	EPS 240V 500W	Photo Optic Halogen Lamps	20
9060940	ENH 120V 250W	Photo Optic Halogen Lamps	17
9060943	EKE 21V 150W	Photo Optic Halogen Lamps	15

Code	Reference	Section	Page
9060954	DDM 19V 80W	Photo Optic Halogen Lamps	15
9060957	ELD 21V 150W	Photo Optic Halogen Lamps	15
9060962	ESY 100V 150W	Photo Optic Halogen Lamps	20
9060967	DED 13.8V 85W	Photo Optic Halogen Lamps	15
9060984	DDL 20V 150W	Photo Optic Halogen Lamps	15
9061010	JC 24V 300W	Photo Optic Halogen Lamps	19
9061018	JCP 100V 650W	Photo Optic Halogen Lamps	20
9061039	EXR 82V 300W	Photo Optic Halogen Lamps	15
9061051	CKK 240V 150W	Photo Optic Incandescent Lamps	28
9061052	CSF 240V 300W	Photo Optic Incandescent Lamps	29
9061060	JCD 100V 650W	Photo Optic Halogen Lamps	20
9061063	JCR 100V 300W	Photo Optic Halogen Lamps	17
9061109	PAR 64 1000W NSP	Photo Optic Incandescent Lamps	32
9061116	FKJ CP40 240V 1000W	Photo Optic Halogen Lamps	22
9061118	FKK CP41 240V 2000W	Photo Optic Halogen Lamps	22
9061119	FTL CP43 240V 2000W	Photo Optic Halogen Lamps	22
9061121	FVB CP70 240V 1000W	Photo Optic Halogen Lamps	22
9061122	FSK CP81 240V 300W	Photo Optic Halogen Lamps	22
9061124	FRJ CP82 240V 500W	Photo Optic Halogen Lamps	22
9061126	FRM CP89 240V 650W	Photo Optic Halogen Lamps	22
9061127	PAR 64 1000W SP	Photo Optic Incandescent Lamps	32
9061128	PAR 64 1000W FL	Photo Optic Incandescent Lamps	32
9061142	FLW 24V 300W	Photo Optic Halogen Lamps	19
9061150	FNT 24V 275W	Photo Optic Halogen Lamps	19
9061181	EJM 21V 150W	Photo Optic Halogen Lamps	15
9061182	EXY 82V 250W	Photo Optic Halogen Lamps	15
9061183	ENG 120V 300W	Photo Optic Halogen Lamps	17
9061306	BVA 120V 900W	Photo Optic Halogen Lamps	20
9061358	ESD 120V 150W	Photo Optic Halogen Lamps	17
9061385	FEP CP77 240V 1000W	Photo Optic Halogen Lamps	22
9061531	PAR 36 6V 30W	Photo Optic Incandescent Lamps	32
9061532	PAR 56 12V 300W	Photo Optic Incandescent Lamps	33
9061542	GCJ T25 240V 500W	Photo Optic Halogen Lamps	23
9061545	GCL T27 240V 650W	Photo Optic Halogen Lamps	23
9061548	FWR T19 240V 1000W	Photo Optic Halogen Lamps	23
9061551	FWT T29 240V 1200W	Photo Optic Halogen Lamps	23
9061617	CXR/CXL 8V 50W	Photo Optic Incandescent Lamps	29
9061619	CJW/CJT 230V 100W	Photo Optic Incandescent Lamps	28
9061646	CKK 230V 150W	Photo Optic Incandescent Lamps	28
9061652	CSF 230V 300W	Photo Optic Incandescent Lamps	29
9061656	CTD 230V 150W	Photo Optic Incandescent Lamps	29
9061663	BXT 12V 100W	Photo Optic Incandescent Lamps	28
9061676	CYN 24V 150W	Photo Optic Incandescent Lamps	29
9061768	FXL 82V 410W	Photo Optic Halogen Lamps	17

SLI International Product  
Marketing Lamps  
Noorderlaan 105c  
2030 Antwerpen  
Phone +32 (0) 3 610 44 80  
Telefax +32 (0) 3 610 44 58  
www.sylvania-lighting.com

## EUROPE

Germany  
SLI Lichtsysteme GmbH  
Graf-Zeppelin-Str. 9-12  
91056 Erlangen  
Phone (+49) 9131 793-500  
Telefax (+49) 9131 793-345  
info.de@sylvania-lighting.com  
www.sli-deutschland.de

Eastern Europe  
SLI Lichtsysteme GmbH  
Graf-Zeppelin-Str. 9-12  
91056 Erlangen  
Phone (+49) 9131 793-499  
Telefax (+49) 9131 793-407  
info.de@sylvania-lighting.com

UK  
SLI Lighting UK Limited  
Otley Road, Shipley  
West Yorkshire BD17 7SN  
Phone +44(0) 1274 537 703  
Telefax +44(0) 1274 580 632

Slovakia  
SLI Lichtsysteme GmbH  
Vajanského 62  
900 01 Modra  
Phone (+421) 704 6474506  
Telefax (+421) 704 6474506

Ceská Republic  
SLI Lichtsysteme GmbH  
Pirinská 3244  
143 00 Praha 4  
Phone (+420) 2 401 51 79  
Telefax (+420) 2 401 51 79

Finland  
Sylvania Lumiance Oy  
Sirrikuja 3 A  
00940 Helsinki  
Phone (+358) 9 54212100  
Telefax (+358) 9 54212130  
fi.info@sylvania-lighting.com

Austria  
SLI Lichtsysteme GmbH  
Otto-Probst-Str. 22-24  
1100 Wien  
Phone (+43) 1617 4507 22  
Telefax (+43) 1617 4507 23  
info.de@sylvania-lighting.com

Switzerland  
Sylvania Lighting S.A.  
4, Chemin des Léchères  
1217 Meyrin  
PO Box 368  
Phone (+41) 227198580  
Telefax (+41) 227198581  
info.ch@sylvania-lighting.com  
www.sylvania-lighting.com

Export  
Sylvania Lighting S.A.  
4, Chemin des Léchères  
1217 Meyrin – Switzerland  
PO Box 368  
Phone (+41) 227198530  
Telefax (+41) 227198531  
info.export-ch@sylvania-lighting.com  
www.sylvania-lighting.com

Belgium  
SLI Benelux  
Noorderlaan 105c  
2030 Antwerpen  
Phone (+32) 3 610 44 44  
Telefax (+32) 3 610 44 55  
be.info@sylvania-lighting.com  
www.sylvania-lighting.com

the Netherlands  
SLI Benelux  
Postbus 5651  
4801 EB Breda  
Phone (+31) 76 750 44 44  
Telefax (+31) 76 750 44 55  
nl.info@sylvania-lighting.com  
www.sylvania-lighting.com

France  
SLI France SA  
29, rue des Trois Fontanot  
92722 Nanterre, Cedex  
Phone (+33) 1 55 51 11 51  
Telefax (+33) 1 55 51 11 52

Denmark  
Sylvania A / S  
Tempovej 14  
2750 Ballerup  
Phone (+45) 44 86 00 00  
Telefax (+45) 44 86 00 01  
kundeservice@sylvania-lighting.com  
www.sylvania-lighting.com

Greece  
Sylvania A.E.E.E.  
89 Kyprou Ave., Argypoli  
GR-164 51, Athens  
Phone (+30) 210 996 65 61  
Telefax (+30) 210 996 90 29

Italy  
Sylvania S.p.A.  
Via Figino 105  
20016 Pero MI  
Phone (+39) 02 33 93 11 58  
Telefax (+39) 02 33 93 11 91  
it.info@sylvania-lighting.com  
www.sylvania.it

Norway  
Sylvania Lumiance A S  
Ole Deviks Vei 44  
0668 Oslo  
Phone (+47) 23 067470  
Telefax (+47) 23 067471  
www.sli.no

Spain  
SLI Sylvania S.A.  
Los Llanos de Jerez, 17  
28820 Coslada (Madrid)  
Phone (+34) 91 669 90 00  
Telefax (+34) 91 673 73 64  
www.sylvania-lighting.com

Sweden  
Sylvania Lumiance AB  
Uppköparvägen 7  
120 44 Årsta  
Phone (+46) 8 556 322 00  
Telefax (+46) 8 556 322 10  
sli-sweden@sylvania-lighting.com  
www.sli.no

Portugal  
SLI Sylvania S.A.  
Campo Grande, 35 - 11° C  
1700-087 Lisbon  
Phone (+351) 21 793 77 36/37  
Telefax (+351) 21 793 77 38  
www.sylvania-lighting.com

## OUTSIDE EUROPE

USA  
SLI Lighting Products, Inc.  
122 East Laurel Street  
Mullins, SC 29574  
Phone (+1) 800-922-6693  
Telefax (+1) 843-464-1203

Hong Kong  
Sylvania (Hong Kong) Ltd.  
1114 Peninsula Centre  
67 Mody Road  
Kowloon  
Phone (+852) 23695531  
Telefax (+852) 27218621

Australia  
Sylvania Lighting Australasia  
Pty Ltd  
Sylvania Way  
Lisarow NSW 2250  
Phone (+61) 2 4328 0600  
Telefax (+61) 2 4328 2605  
sylvania@sla.net.au  
www.sla.net.au

New Zealand  
Sylvania Lighting Australasia  
Limited  
318 Rosebank Road  
PO box 19-116  
Avondale Auckland NZ  
Phone (+1164) 9 828 3113  
Telefax (+1164) 9 828 7426  
slanz@sla.net.au  
www.sla.net.au