



2015 | CONSUMER LIGHTING CATALOG  
International Edition

**LeKise**



# CONTENTS

FLUORESCENT LAMPS	1
COMPACT FLUORESCENT LAMPS	6
CONTROL GEARS	10
LIGHTING FITTINGS	13
LED LAMPS	16
LED FIXTURES	21
SWITCHES & SOCKETS	26



## LINEAR FLUORESCENT LAMPS

LeKise has been manufacturing the fluorescent lamps more than 1000 million in past 30 years under technical collaboration with Japan.

We have been delivering the high quality level to our customers in more than 40 markets. The quality you can rely on.



T10 HALOLUX™



T8 HALOLUX™



T8 SUPERLUX™



T8 SNOWWHITE



T8 BLACKLIGHT



T5 STARBRIGHT™



T9 CIRCLINE

T10 HALOLUX™



**Features**

- ✓ Low-pressure mercury discharge lamp with a tubular 32mm envelope.
- ✓ Halophosphate coating technology.
- ✓ High efficiency.
- ✓ Average rated life up to 8,000 hrs.
- ✓ G13 base.

**Applications**

- ✓ Office lighting
- ✓ Industry
- ✓ Shop
- ✓ Department store
- ✓ Street lighting
- ✓ Outdoor applications only in suitable luminaire

Product Code	Product Description	Nom. Watts	Base	CCT (K)	Initial Lumen(lm)	CRI (Ra)	Rated Avg. Life(hrs.)	Length (mm)	Diameter (mm)	Qty /Ctn
1280007001	FL20T10/HaloLux/765	20	G13	6500	1090	70	8,000	590	34	25
1280010001	FL40T10/HaloLux/765	40	G13	6500	2690	70	8,000	1200	34	25

T8 HALOLUX™



**Features**

- ✓ Energy saving up to 10%.
- ✓ Halophosphate coated technology.
- ✓ Superior lumen maintenance.
- ✓ Retrofittable with existing G13 base fitting.
- ✓ Long life span up to 22,000 hrs.
- ✓ Comply with IEC/EN 60081 and IEC/EN 61195.

**Applications**

- ✓ Office
- ✓ Public building
- ✓ School or college
- ✓ Minimart or supermarket
- ✓ Hospital

Product Code	Product Description	Nom. Watts	Base	CCT (K)	Initial Lumen(lm)	CRI (Ra)	Rated Avg. Life(hrs.)	Length (mm)	Diameter (mm)	Qty /Ctn
1280027003	FL18T8/Halolux LL/630	18	G13	3000	1160	52	22,000	600	26	25
1280015002	FL18T8/Halolux LL/640	18	G13	4000	1127	62	22,000	600	26	25
1280003009	FL18T8/Halolux LL/765	18	G13	6500	1030	70	22,000	600	26	25
1280030003	FL36T8/Halolux LL/630	36	G13	3000	2800	52	22,000	1200	26	25
1280018003	FL36T8/Halolux LL/640	36	G13	4000	2760	62	22,000	1200	26	25
1280006009	FL36T8/Halolux LL/765	36	G13	6500	2600	70	22,000	1200	26	25

## T8 SUPERLUX™



## Features

- ✓ Energy saving up to 10%.
- ✓ Tri - phosphor coated technology.
- ✓ High Initial light output.
- ✓ Superior lumen maintenance.
- ✓ Retrofitable with existing G13 base fitting.
- ✓ Long life span up to 22,000 hrs.
- ✓ Higher efficacy is achieved with electronic gears.
- ✓ High Color Rendering Index up to 80 Ra.
- ✓ Comply with IEC/EN 60081 and IEC/EN 61195.

## Applications

- ✓ Office
- ✓ Public building
- ✓ School or college
- ✓ Minimart or supermarket
- ✓ Hospital

Product Code	Product Description	Nom. Watts	Base	CCT (K)	Initial Lumen(lm)	CRI (Ra)	Rated Avg. Life(hrs.)	Length (mm)	Diameter (mm)	Qty /Ctn
1280039003	FL18T8/SuperLux LL/865	18	G13	6500	1300	80	22,000	600	26	25
1280042003	FL36T8/SuperLux LL/865	36	G13	6500	3250	80	22,000	1200	26	25

## T8 SNOWWHITE



## Features

- ✓ Offers a very high color temperature at 12000K.
- ✓ Special phosphor mix with advance water-powder coating technology.
- ✓ Use triple-coiled filament to ensure electron powder and prolong service life.
- ✓ Offer good color rendering.
- ✓ Retrofitable with existing G13 base fitting.
- ✓ Long life span up to 22,000 hrs.
- ✓ Comply with IEC/EN 60081 and IEC/EN 61195.

## Applications

- ✓ Office
- ✓ Restaurant
- ✓ Shop
- ✓ School
- ✓ Laboratory
- ✓ Indoor Ski Center

Product Code	Product Description	Nom. Watts	Base	CCT (K)	Initial Lumen(lm)	CRI (Ra)	Rated Avg. Life(hrs.)	Length (mm)	Diameter (mm)	Qty /Ctn
1280193003	FL18T8/Snowwhite/12000K	18	G13	12000	930	77	22,000	600	26	25
1280195003	FL36T8/Snowwhite/12000K	36	G13	12000	2320	77	22,000	1200	26	25

### T8 BLACKLIGHT



#### Features

- ✓ Non-Hazardous to skin and eye.
- ✓ Blacklight (BL) lamps are commonly used in “Bug Zappers”.
- ✓ Lamps transmit near UV light spectrum at 350 nm and 365nm respectively.
- ✓ Retrofittable with existing G13 base fitting.
- ✓ Comply with IEC/EN 61195.

#### Applications

- ✓ Detection (Food, Mineral)
- ✓ Inspection (Flaw, Leak)
- ✓ Identification (Marker Powder Ink)
- ✓ Reprographic
- ✓ Insect Trap
- ✓ Display and Entertainment

Product Code	Product Description	Nom. Watts	Base	CCT (K)	UV Output Power (W)	Rated Avg. Life(hrs.)	Length (mm)	Diameter (mm)	Qty /Ctn
1280345001	FL10T8/BL	10	G13	25000	1.5	3,000	330	26	25
1280346001	FL15T8/BL	15	G13	25000	2.1	3,000	436	26	25
1280347001	FL18T8/BL	18	G13	25000	3.0	5,000	600	26	25
1280350001	FL36T8/BL	36	G13	25000	7.5	5,000	1200	26	25

### T5 STARBRIGHT™



#### Features

- ✓ Energy saving up to >20%.
- ✓ Triphosphate coated technology.
- ✓ Superior luminous flux.
- ✓ High color rendering >80.
- ✓ Ideal for energy saving choice to replace traditional T8 fluorescent lamp.
- ✓ Long life span up to 20,000 hrs.
- ✓ Low mercury content <5 mg.
- ✓ RoHS compliance.

#### Applications

- ✓ Office
- ✓ Public building
- ✓ School or college
- ✓ Minimart or supermarket
- ✓ Hospital
- ✓ Warehouse

Product Code	Product Description	Nom. Watts	Base	CCT (K)	Initial Lumen(lm)	CRI (Ra)	Rated Avg. Life(hrs.)	Length (mm)	Diameter (mm)	Qty /Ctn
1286003005	FL14T5/StarBright/830	14	G5	3000	1190	≥80	20,000	549	17	25
1280200003	FL14T5/StarBright/840	14	G5	4000	1190	≥80	20,000	549	17	25
1280197005	FL14T5/StarBright/865	14	G5	6500	1100	≥80	20,000	549	17	25
1286004003	FL21T5/StarBright/830	21	G5	3000	2000	≥80	20,000	849	17	25
1286001003	FL21T5/StarBright/840	21	G5	4000	2000	≥80	20,000	849	17	25
1280198003	FL21T5/StarBright/865	21	G5	6500	1950	≥80	20,000	849	17	25
1286005005	FL28T5/StarBright/830	28	G5	3000	2600	≥80	20,000	1149	17	25
1286002003	FL28T5/StarBright/840	28	G5	4000	2600	≥80	20,000	1149	17	25
1280199001	FL28T5/StarBright/865	28	G5	6500	2500	≥80	20,000	1149	17	25
1286008003	FL54T5/StarBright/830	54	G5	3000	4200	≥80	20,000	1149	17	25
1286007003	FL54T5/StarBright/840	54	G5	4000	4200	≥80	20,000	1149	17	25
1286006003	FL54T5/StarBright/865	54	G5	6500	4200	≥80	20,000	1149	17	25

## T9 CIRCLINE



## Features

- ✓ Superior lumen maintenance.
- ✓ 4-pin (G10q) base.
- ✓ Wide power range of choices : 22W, 30W and 32W.
- ✓ Long life span up to 10,000 hrs.

## Applications

- ✓ Home lighting
- ✓ Retail lighting
- ✓ Hotel
- ✓ Restaurant
- ✓ Corridor, hallway
- ✓ Garden, courtyard

Product Code	Product Description	Nom. Watts	Base	CCT (K)	Initial Lumen(lm)	CRI (Ra)	Rated Avg. Life(hrs.)	Diameter (mm)	Qty /Ctn
<b>STANDARD</b>									
1280517001	FCL22T9/730	22	G10q	3000	1040	70	10,000	216	20
1280501002	FCL22T9/765	22	G10q	6500	900	70	10,000	216	20
1280502001	FCL30T9/765	30	G10q	6500	1370	70	10,000	233	20
1280519001	FCL32T9/730	32	G10q	3000	1580	70	10,000	305	20
1280503005	FCL32T9/765	32	G10q	6500	1780	70	10,000	305	20
<b>SUPER</b>									
1280507002	FCL32T9/865	32	G10q	6500	2195	80	10,000	305	20





## COMPACT FLUORESCENT LAMPS

LeKise's integrated compact fluorescent lamps combine energy saving benefits with high quality lighting. The lamps are aesthetic shape and no compromise to quality with color temperature from 2700K – 6500K.



T4 STICK ECO



T3 STICK MINI



T2 MINI TWISTER



T4 HURICANE



T5 HURICANE

## T4 STICK ECO



## Features

- ✓ Self-ballasted compact fluorescent lamp.
- ✓ Tri-phosphor coated rendering natural color and brightness.
- ✓ Excellent color rendering, CRI >80.
- ✓ Energy saving upto 80% and long life.
- ✓ Plastic shell made from flame-retardant PBT grade.
- ✓ Quick start technology, 60% light output in less than 15 seconds.
- ✓ Environmentally conscious, use solid mercury <2mg.
- ✓ Comply with IEC standards, CE and RoHS.

## Applications

- ✓ Home lighting
- ✓ Retail lighting
- ✓ Hotel
- ✓ Restaurant
- ✓ Corridor, hallway
- ✓ Garden, courtyard

Product Code	Product Description	Nom. Watts	Base	CCT (K)	Initial Lumen(lm)	CRI (Ra)	Rated Avg. Life(hrs.)	Length (mm)	Diameter (mm)	Qty /Ctn
1020001	CFL5W/2U/T4/827/E27 220-240V	5	E27	2700	190	80	8,000	116	42	50
1020003	CFL5W/2U/T4/865/E27 220-240V	5	E27	6500	180	80	8,000	116	42	50
1020004	CFL8W/2U/T4/827/E27 220-240V	8	E27	2700	360	80	8,000	138	42	50
1020006	CFL8W/2U/T4/865/E27 220-240V	8	E27	6500	350	80	8,000	138	42	50
1020007	CFL11W/2U/T4/827/E27 220-240V	11	E27	2700	545	80	8,000	150	42	50
1020009	CFL11W/2U/T4/865/E27 220-240V	11	E27	6500	535	80	8,000	150	42	50
1020010	CFL14W/2U/T4/827/E27 220-240V	14	E27	2700	750	80	8,000	165	42	50
1020012	CFL14W/2U/T4/865/E27 220-240V	14	E27	6500	740	80	8,000	165	42	50
1020013	CFL18W/3U/T4/827/E27 220-240V	18	E27	2700	1020	80	8,000	164	48.5	50
1020015	CFL18W/3U/T4/865/E27 220-240V	18	E27	6500	1010	80	8,000	164	48.5	50
1020016	CFL23W/3U/T4/827/E27 220-240V	23	E27	2700	1390	80	8,000	176	48.5	50
1020018	CFL23W/3U/T4/865/E27 220-240V	23	E27	6500	1380	80	8,000	176	48.5	50

## T3 STICK MINI



## Features

- ✓ Self-ballasted compact fluorescent lamp.
- ✓ Tri-phosphor coated rendering natural color and brightness.
- ✓ Excellent color rendering, CRI >80.
- ✓ Energy saving upto 80% and long life.
- ✓ Plastic shell made from flame-retardant PBT grade.
- ✓ Quick start technology, 60% light output in less than 15 seconds.
- ✓ Environmentally conscious, use solid mercury <2mg.
- ✓ Comply with IEC standards, CE and RoHS.

## Applications

- ✓ Home lighting
- ✓ Retail lighting
- ✓ Hotel
- ✓ Restaurant
- ✓ Corridor, hallway
- ✓ Garden, courtyard

Product Code	Product Description	Nom. Watts	Base	CCT (K)	Initial Lumen(lm)	CRI (Ra)	Rated Avg. Life(hrs.)	Length (mm)	Diameter (mm)	Qty /Ctn
1020019	CFL5W/2U/T3/827/E27 220-240V	5	E27	2700	190	80	8,000	110	36	50
1020021	CFL5W/2U/T3/865/E27 220-240V	5	E27	6500	180	80	8,000	110	36	50
1020022	CFL8W/2U/T3/827/E27 220-240V	8	E27	2700	430	80	8,000	134	36	50
1020024	CFL8W/2U/T3/865/E27 220-240V	8	E27	6500	420	80	8,000	134	36	50
1020025	CFL11W/3U/T3/827/E27 220-240V	11	E27	2700	550	80	8,000	120	42	50
1020027	CFL11W/3U/T3/865/E27 220-240V	11	E27	6500	535	80	8,000	120	42	50
1020028	CFL14W/3U/T3/827/E27 220-240V	14	E27	2700	810	80	8,000	143	42	50
1020030	CFL14W/3U/T3/865/E27 220-240V	14	E27	6500	800	80	8,000	143	42	50

## T2 MINI TWISTER



## Features

- ✓ Self-ballasted compact fluorescent lamp.
- ✓ Tri-phosphor coated rendering natural color and brightness.
- ✓ Excellent color rendering, CRI >80.
- ✓ Energy saving upto 80% and long life.
- ✓ Plastic shell made from flame-retardant PBT grade.
- ✓ Quick start technology, 60% light output in less than 15 seconds.
- ✓ Environmentally conscious, use solid mercury <2mg.
- ✓ Comply with IEC standards, CE and RoHS.

## Applications

- ✓ Home lighting
- ✓ Retail lighting
- ✓ Hotel
- ✓ Restaurant
- ✓ Corridor, hallway
- ✓ Garden, courtyard

Product Code	Product Description	Nom. Watts	Base	CCT (K)	Initial Lumen(lm)	CRI (Ra)	Rated Avg. Life(hrs.)	Length (mm)	Diameter (mm)	Qty /Ctn
1020037	CFL8W/FSP/T2/827/E27 220-240V	8	E27	2700	430	80	8,000	100	40	50
1020039	CFL8W/FSP/T2/865/E27 220-240V	8	E27	6500	420	80	8,000	100	40	50
1020040	CFL12W/FSP/T2/827/E27 220-240V	12	E27	2700	680	80	8,000	106	40	50
1020042	CFL12W/FSP/T2/865/E27 220-240V	12	E27	6500	670	80	8,000	106	40	50
1020043	CFL15W/FSP/T2/827/E27 220-240V	15	E27	2700	860	80	8,000	102	40	50
1020045	CFL15W/FSP/T2/865/E27 220-240V	15	E27	6500	850	80	8,000	102	40	50
1020046	CFL20W/FSP/T2/827/E27 220-240V	20	E27	2700	1200	80	8,000	108	50	50
1020048	CFL20W/FSP/T2/865/E27 220-240V	20	E27	6500	1190	80	8,000	108	50	50
1020049	CFL23W/FSP/T2/827/E27 220-240V	23	E27	2700	1400	80	8,000	115	50	50
1020051	CFL23W/FSP/T2/865/E27 220-240V	23	E27	6500	1390	80	8,000	115	50	50

## T4 HURICANE



## Features

- ✓ Self-ballasted compact fluorescent lamp.
- ✓ Tri-phosphor coated rendering natural color and brightness.
- ✓ Excellent color rendering, CRI >80.
- ✓ Energy saving upto 80% and long life.
- ✓ Plastic shell made from flame-retardant PBT grade.
- ✓ Quick start technology, 60% light output in less than 15 seconds.
- ✓ Environmentally conscious, use solid mercury <2mg.
- ✓ Comply with IEC standards, CE and RoHS.

## Applications

- ✓ High and low bay
- ✓ Warehouse
- ✓ Gymnasium
- ✓ Church

Product Code	Product Description	Nom. Watts	Base	CCT (K)	Initial Lumen(lm)	CRI (Ra)	Rated Avg. Life(hrs.)	Length (mm)	Diameter (mm)	Qty /Ctn
1020052	CFL28W/HSP/T4/827/E27 220-240V	28	E27	2700	1900	80	8,000	165	64	10
1020054	CFL28W/HSP/T4/865/E27 220-240V	28	E27	6500	1800	80	8,000	165	64	10
1020055	CFL35W/HSP/T4/827/E27 220-240V	35	E27	2700	2400	80	8,000	178	64	10
1020057	CFL35W/HSP/T4/865/E27 220-240V	35	E27	6500	2300	80	8,000	178	64	10
1020058	CFL45W/HSP/T4/827/E27 220-240V	45	E27	2700	2700	80	8,000	184.5	64	10
1020060	CFL45W/HSP/T4/865/E27 220-240V	45	E27	6500	2600	80	8,000	184.5	64	10

## T5 HURICANE



## Features

- ✓ Self-ballasted compact fluorescent lamp.
- ✓ Tri-phosphor coated rendering natural color and brightness.
- ✓ Excellent color rendering, CRI >80.
- ✓ Energy saving upto 80% and long life.
- ✓ Plastic shell made from flame-retardant PBT grade.
- ✓ Quick start technology, 60% light output in less than 15 seconds.
- ✓ Environmentally conscious, use solid mercury <2mg.
- ✓ Comply with IEC standards, CE and RoHS.

## Applications

- ✓ High and low bay
- ✓ Warehouse
- ✓ Gymnasium
- ✓ Church

Product Code	Product Description	Nom. Watts	Base	CCT (K)	Initial Lumen(lm)	CRI (Ra)	Rated Avg. Life(hrs.)	Length (mm)	Diameter (mm)	Qty /Ctn
1020061	CFL65W/HSP/T5/827/E27 220-240V	65	E27	2700	3700	80	8,000	226.5	78	8
1020063	CFL65W/HSP/T5/865/E27 220-240V	65	E27	6500	3600	80	8,000	226.5	78	8
1020064	CFL85W/HSP/T5/827/E27 220-240V	85	E27	2700	4800	80	8,000	306.5	78	9
1020066	CFL85W/HSP/T5/865/E27 220-240V	85	E27	6500	4700	80	8,000	306.5	78	9



## CONTROL GEARS

LeKise control gears are developed to drive the optimal lamp performance and met to standard requirement. Durable and high reliability.



ELECTROMAGNETIC  
BALLAST



TRANSFORMER  
(HALOGEN)



ELECTRONIC TRANSFORMER  
(HALOGEN)



STARTER

ELECTROMAGNETIC BALLAST (FLUORESCENT)

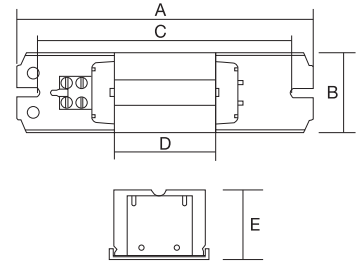


Features

- ✓ Use For FL T8 and FCL T9 lamps.
- ✓ Made of high quality material with advanced technology.
- ✓ 100% with 4-steps automatically final testing as;
  - Winding circuit continuity.
  - Leakage current testing.
  - High voltage impulse testing.
  - Ballast current testing.
- ✓ 200°C winding temperature resistance.
- ✓ Long life service.
- ✓ Non-Electromagnetic interference.
- ✓ Provide high luminance efficacy with full operating wattage.
- ✓ Comply with Thai Industrial Standards.

Applications

- ✓ Home lighting
- ✓ Office
- ✓ Department store, supermarket
- ✓ Industrial lighting, warehouse



Dimension (mm)

Model	Dimension (mm.)		C	D	E
	A	B			
EMB-18W	153	41	130	51	30
EMB-32W	153	41	130	51	30
EMB-36W	153	41	130	51	30

Product Code	Product Description	Lamp Watt	V / Hz	Current (A)	PF	TW	Dimension (mm.)		Qty /Ctn
							w	L	
1282512001	EMB-18W	FL-18W	220V~50Hz	0.36	0.35(0.37)	130	41	153	20
1282513001	EMB-32W	FCL-32W	220V~50Hz	0.45	0.45	130	41	153	20
1282514001	EMB-36W	FL-36W	220V~50Hz	0.42	0.49(0.54)	130	41	153	20

TRANSFORMER (HALOGEN)

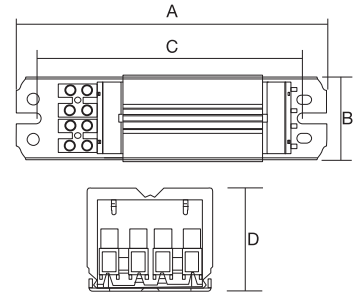


Features

- ✓ Transformer winding coil made from high quality material giving excellent heat resistance.
- ✓ Long Lifetime with low heating in comparison with other transformers in the market.
- ✓ Provides high luminous efficacy using full operating wattage.
- ✓ No radio frequency interference and conforming to TIS 1955-2551 standards.
- ✓ High quality terminal wires.
- ✓ Easy Installation.

Applications

- ✓ Home lighting
- ✓ Department store, Supermarket
- ✓ Office
- ✓ Industrial lighting area, Warehouse



Dimension (mm)

Model	Dimension (mm)			
	A	B	C	D
MTM-50	154	42.5	130	36

Product Code	Product Description	Lamp Watt	V / Hz	Current(A)		TA °C	Dimension (mm.)		Qty /Ctn
				Primary	Secondary		w	L	
1282574001	MTM-50	12V 50W	220V~50Hz	0.25	0.40	60	42.5	154	20

ELECTRONIC TRANSFORMER (HALOGEN)

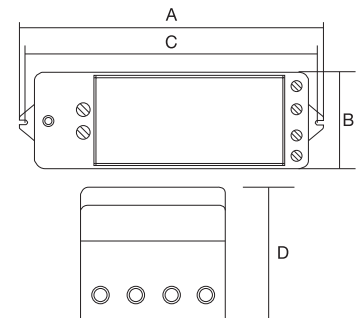


Features

- ✓ More safety with Integrated thermostat inside for overheating protection.
- ✓ Suitable to use with dimmers.
- ✓ Automatic safety cut-off function at 80°C
- ✓ Long Lifetime with reduced overheating.
- ✓ No radio frequency interference and conforming to TIS 1955-2551 standards.
- ✓ Easy for installation and maintenance.

Applications

- ✓ Home lighting
- ✓ Department store, Supermarket
- ✓ Office



Dimension (mm)

Model	Dimension (mm)			
	A	B	C	D
ETM-50	130	41	126	30

Product Code	Product Description	Lamp Watt	V / Hz	Current(A)		TA °C	TC °C	Dimension (mm.)			Qty /Ctn
				Primary	Secondary			w	L	Mig Center	
1282575001	ETM-50	2x20W / 1x35W / 1x50W	220V~50Hz	0.25	5.00	80	50	41	130	130	20

## STARTER



## Features

- ✓ Replacement friendly with easy recognition and easy installation.
- ✓ Flicker free and instant startup without any radioactive interference.
- ✓ Longer service life in comparison with conventional starters.
- ✓ Made with high quality PC material and flame retardant components with UV protection.

## Applications

- ✓ Used with general T8/T9/T12 lamps with electromagnetic ballasts.

Product Code	Product Description	Power	Voltage	Circuit	Rated Avg. Life(hrs.)	Length	Diameter	Qty /Ctn
128250001	FL S10/TB	4-65W	220V-240V	Single	6,000	39	21.5	25/500



## LIGHTING FITTINGS

Brighten up either your residence or commercial retail with LeKise lighting fittings which are energy-efficient and low maintenance.



RECESSED DOWNLIGHT  
VEGA



T8 FULL SET



T8 LIKE



T5 LIKE



RECESSED DOWNLIGHT  
VEGA



Features

- ✓ Mild steel rim and housing thickness of 0.5mm finished with white electrostatic polyester powder coating.
- ✓ Premium quality 99.8% anodized Aluminum reflector thickness of 0.9 mm.
- ✓ Frosted and Stripe facet pattern layers giving terrific vibrant ambience with low cut for better heat dissipation.
- ✓ Lamp base made from porcelain material same grade with electrical insulator giving excellent heat resistance.
- ✓ More safety with ground wire system including nylon connecting for base device.
- ✓ Simple and secure connection with ground terminal.

Applications

- ✓ Office
- ✓ Household application
- ✓ Department store
- ✓ Restaurant
- ✓ Hotel

**NEW**  
Special Designed  
for LED

Product Code	Product Description	Product Size (Inch)	Cut Hole Size (mm)	Recommended Watts (W) LED Lamps	Base	Light Efficiency	Beam Angle(°)	Dimension (mm.)			Qty /Ctn
								D X H	D2		
3010001	DFV/125/1XE27/R VEGA	4	120	<10	E27	85.60%	115	141 x 135	115		24
3010002	DFV/160/1XE27/R VEGA	6	150	>10	E27	88.90%	110	174 x 135	145		18

T8 FULL SET



Features

- ✓ Fixture made of 0.4mm thickness steel with Epoxy powder coated.
- ✓ Spring lampholder size easy for lamp installation. Made of Polycarbonate (PC) with high heat resistance.
- ✓ High quality cable wire with high heat resistance self-extinguished sleeve at 105°C.
- ✓ Plastic Twist-Lock Knob convenient for using, no tools needed.

Applications

- ✓ Home lighting
- ✓ Office
- ✓ Department store, supermarket
- ✓ Industrial lighting, warehouse

Product Code	Product Description	Voltage	Nom. Watt (W)	Lamp	Color Description	CCT (K)	Initial Lumen(lm)	CRI (Ra)	Rated Avg. Life (hrs.)*	Dimension (mm.)			Qty /Ctn
										W	L	H	
1283027001	FS-F118D/W/S-B	220V	18	T8	Daylight	6500	1127	70	22,000	54.5	640	79	6
1283028001	FS-F136D/W/S-B	220V	36	T8	Daylight	6500	2760	70	22,000	54.5	1250	79	6

\*Refer to averaged lamp life.

T8 LIKE



Features

- ✓ Compact lamp fixture made of high-quality PC.
- ✓ Integrated electronic ballast.
- ✓ Instant smooth and flicker free start up.
- ✓ Unique and aesthetic design.

Applications

- ✓ All typical indoor lighting
- ✓ Office
- ✓ Department Store
- ✓ Warehouse

Product Code	Product Description	Voltage	Nom. Watt (W)	Lamp	Color Description	CCT (K)	Initial Lumen(lm)	CRI (Ra)	Rated Avg. Life (hrs.)*	Dimension (mm.)			Qty /Ctn
										W	L	H	
1283154001	FT8/18W/D EFS LeKise Like	220V	18	T8	Daylight	6500	1127	70	22,000	32	706	41	10
1283155001	FT8/36W/D EFS LeKise Like	220V	36	T8	Daylight	6500	2760	70	22,000	32	1316	41	10

\*Refer to averaged lamp life.

T5 LIKE



**Features**

- ✓ Compact lamp fixture made of high-quality PC.
- ✓ Integrated electronic ballast.
- ✓ Instant smooth and flicker free start up.
- ✓ Unique and aesthetic design.

**Applications**

- ✓ All typical indoor lighting
- ✓ Office
- ✓ Department Store
- ✓ Warehouse

Product Code	Product Description	Voltage	Nom. Watt (W)	Lamp	Color Description	CCT (K)	Initial Lumen(lm)	CRI (Ra)	Rated Avg. Life(hrs.)	Dimension (mm.)			Qty /Ctn
										w	L	H	
1283156001	FT5/14W/D EFS LeKise Like	220V	14	T5	Extra Daylight	6500	1100	≥80	20,000	26	688	34	10
1283157001	FT5/28W/D EFS LeKise Like	220V	28	T5	Extra Daylight	6500	2500	≥80	20,000	26	1288	34	10

\*Refer to averaged lamp life.



## LED LAMPS

Lekise offers the wide array of LED Lamps for perfect retrofit application to traditional light source whilst rendering more energy saving and creating friendly global environment.



KLASSIC™

KLASSIC PLUS™

CANDLESTAR  
(MILKY)CANDLESTAR  
(CLEAR)

SPOTLUX™(SMD)

QUICKFIT GLASS™

QUICKFIT GUARD™

QUICKFIT PC™

## KLASSIC™



## Features

- ✓ LED bulb in standard A60 configuration with PC frosted cover.
- ✓ Housing made by plastic body with no compromise to heat dissipation.
- ✓ Low energy consumption 5W and 7W is equivalent to 40W and 60W GLS.
- ✓ Available in 3 different color temperatures: 3000K, 4000K and 6500K.
- ✓ Driver designed with IC circuit and long life upto 15,000 hours.
- ✓ No UV and IR radiation in the light beam.
- ✓ Instant on and flicker free.
- ✓ Power factor >0.5.

## Applications

- ✓ All typical household luminaires
- ✓ Hotel
- ✓ Office
- ✓ Hospital
- ✓ Facility
- ✓ Commercial area

Product Code	Product Description	Nom. Watts	Base	CCT (K)	Initial Lumen(lm)	CRI (Ra)	Beam Angle(°)	Rated Avg. Life(hrs.)	Length (mm)	Diameter (mm)	Qty /Ctn
1030096	LED5/A60KLASSIC/830/E27 220-240V	5	E27	3000	390	>80	200	15,000	110	60	50
1030097	LED5/A60KLASSIC/840/E27 220-240V	5	E27	4000	400	>80	200	15,000	110	60	50
1030098	LED5/A60KLASSIC/865/E27 220-240V	5	E27	6500	420	>80	200	15,000	110	60	50
1030099	LED7/A60KLASSIC/830/E27 220-240V	7	E27	3000	600	>80	200	15,000	110	60	50
1030100	LED7/A60KLASSIC/840/E27 220-240V	7	E27	4000	610	>80	200	15,000	110	60	50
1030101	LED7/A60KLASSIC/865/E27 220-240V	7	E27	6500	630	>80	200	15,000	110	60	50

## KLASSIC PLUS™



## Features

- ✓ Built using high quality SMD 2835 Epistar® LED chip.
- ✓ Thermo Plastic housing with Aluminum inside for better heat dissipation.
- ✓ PC frosted cover with good light transmittance offering beam angle of 200°.
- ✓ Lifetime upto 30,000 hrs.
- ✓ Higher Lumen efficiency of >90lm/W and CRI >80.
- ✓ Power factor ranging from >0.5 to >0.70.
- ✓ No Flickering, No UV and No IR under specifically tested conditions.
- ✓ TIS Certified.

## Applications

- ✓ All typical household luminaire
- ✓ Hotel
- ✓ Office
- ✓ Hospital
- ✓ Facility
- ✓ Commercial area

Product Code	Product Description	Nom. Watts	Base	CCT (K)	Initial Lumen(lm)	CRI (Ra)	Beam Angle(°)	Rated Avg. Life(hrs.)	Length (mm)	Diameter (mm)	Qty /Ctn
1030057	LED5/A60KLASSICPLUS/830/E27 220-240V	5	E27	3000	450	>80	200	30,000	108	60	50
1030058	LED5/A60KLASSICPLUS/840/E27 220-240V	5	E27	4000	460	>80	200	30,000	108	60	50
1030059	LED5/A60KLASSICPLUS/865/E27 220-240V	5	E27	6500	470	>80	200	30,000	108	60	50
1030060	LED8/A60KLASSICPLUS/830/E27 220-240V	8	E27	3000	650	>80	200	30,000	108	60	50
1030061	LED8/A60KLASSICPLUS/840/E27 220-240V	8	E27	4000	670	>80	200	30,000	108	60	50
1030062	LED8/A60KLASSICPLUS/865/E27 220-240V	8	E27	6500	700	>80	200	30,000	108	60	50
1030063	LED10/A60KLASSICPLUS/830/E27 220-240V	10	E27	3000	790	>80	200	30,000	108	60	50
1030064	LED10/A60KLASSICPLUS/840/E27 220-240V	10	E27	4000	800	>80	200	30,000	108	60	50
1030065	LED10/A60KLASSICPLUS/865/E27 220-240V	10	E27	6500	806	>80	200	30,000	108	60	50
1030066	LED12/A60KLASSICPLUS/830/E27 220-240V	12	E27	3000	1000	>80	200	30,000	118	60	50
1030067	LED12/A60KLASSICPLUS/840/E27 220-240V	12	E27	4000	1020	>80	200	30,000	118	60	50
1030068	LED12/A60KLASSICPLUS/865/E27 220-240V	12	E27	6500	1055	>80	200	30,000	118	60	50
1030069	LED15/A60KLASSICPLUS/830/E27 220-240V	15	E27	3000	1300	>80	200	30,000	118	60	50
1030070	LED15/A60KLASSICPLUS/840/E27 220-240V	15	E27	4000	1325	>80	200	30,000	118	60	50
1030071	LED15/A60KLASSICPLUS/865/E27 220-240V	15	E27	6500	1350	>80	200	30,000	118	60	50

## CANDLESTAR



## Features

- ✓ Exhibits Halogen - incandescent like sparkling light effects.
- ✓ Available in both E14 and E27 bases.
- ✓ Inhibits high quality cooling systems with Stylish appearance.
- ✓ Significant energy savings of more than 80% if compared with traditional lamps.
- ✓ Specially designed lens cover for wide beam angle.
- ✓ Exceptional lifetime of more than 36,000 hrs.
- ✓ Available in both Dimmable and Non Dimmable version.
- ✓ Available in both clear and frosted bulb shapes.
- ✓ Dimmable level is defined from 5% to 100% on the dimmable series.

## Applications

- ✓ Hospitality industry
- ✓ Chandelier and modern Luminaire
- ✓ Pendant application
- ✓ Wall Sconce and table lamp

Product Code	Product Description	Nom. Watts	Wattage Equivalent to	Base	CCT (K)	Initial Lumen(lm)	CRI (Ra)	Beam Angle(°)	Rated Avg. Life(hrs.)@L70	Dimmable	Qty /Ctn
<b>Milky Type</b>											
1040057	LED4/C35M/827/E14 220-240V	4	25	E14	2700	250	≥80	300	36,000	no	36
1040058	LED4/C35M/865/E14 220-240V	4	25	E14	6500	280	≥80	300	36,000	no	36
1040059	LED6/C35M/827/E14 220-240V	6	50	E14	2700	470	≥80	300	36,000	no	36
1040060	LED6/C35M/865/E14 220-240V	6	50	E14	6500	540	≥80	300	36,000	no	36
1040065	LED4D/C35M/827/E14 220-240V	4	25	E14	2700	250	≥80	300	36,000	yes	36
1040066	LED4D/C35M/865/E14 220-240V	4	25	E14	6500	280	≥80	300	36,000	yes	36
1040067	LED6D/C35M/827/E14 220-240V	6	50	E14	2700	470	≥80	300	36,000	yes	36
1040068	LED6D/C35M/865/E14 220-240V	6	50	E14	6500	490	≥80	300	36,000	yes	36
1040005	LED4/C35M/827/E27 220-240V	4	25	E27	2700	250	≥80	300	36,000	no	36
1040006	LED4/C35M/865/E27 220-240V	4	25	E27	6500	280	≥80	300	36,000	no	36
1040007	LED6/C35M/827/E27 220-240V	6	50	E27	2700	470	≥80	300	36,000	no	36
1040008	LED6/C35M/865/E27 220-240V	6	50	E27	6500	540	≥80	300	36,000	no	36
1040013	LED4D/C35M/827/E27 220-240V	4	25	E27	2700	250	≥80	300	36,000	yes	36
1040014	LED4D/C35M/865/E27 220-240V	4	25	E27	6500	280	≥80	300	36,000	yes	36
1040015	LED6D/C35M/827/E27 220-240V	6	50	E27	2700	470	≥80	300	36,000	yes	36
1040016	LED6D/C35M/865/E27 220-240V	6	50	E27	6500	490	≥80	300	36,000	yes	36
<b>Clear Type</b>											
1040053	LED4/C35C/827/E14 220-240V	4	25	E14	2700	250	≥80	300	36,000	no	36
1040054	LED4/C35C/865/E14 220-240V	4	25	E14	6500	260	≥80	300	36,000	no	36
1040055	LED6/C35C/827/E14 220-240V	6	50	E14	2700	470	≥80	300	36,000	no	36
1040056	LED6/C35C/865/E14 220-240V	6	50	E14	6500	540	≥80	300	36,000	no	36
1040061	LED4D/C35C/827/E14 220-240V	4	25	E14	2700	250	≥80	300	36,000	yes	36
1040062	LED4D/C35C/865/E14 220-240V	4	25	E14	6500	280	≥80	300	36,000	yes	36
1040063	LED6D/C35C/827/E14 220-240V	6	50	E14	2700	470	≥80	300	36,000	yes	36
1040064	LED6D/C35C/865/E14 220-240V	6	50	E14	6500	490	≥80	300	36,000	yes	36
1040001	LED4/C35C/827/E27 220-240V	4	25	E27	2700	250	≥80	300	36,000	no	36
1040002	LED4/C35C/865/E27 220-240V	4	25	E27	6500	250	≥80	300	36,000	no	36
1040003	LED6/C35C/827/E27 220-240V	6	50	E27	2700	470	≥80	300	36,000	no	36
1040004	LED6/C35C/865/E27 220-240V	6	50	E27	6500	540	≥80	300	36,000	no	36
1040009	LED4D/C35C/827/E27 220-240V	4	25	E27	2700	250	≥80	300	36,000	yes	36
1040010	LED4D/C35C/865/E27 220-240V	4	25	E27	6500	280	≥80	300	36,000	yes	36
1040011	LED6D/C35C/827/E27 220-240V	6	50	E27	2700	470	≥80	300	36,000	yes	36
1040012	LED6D/C35C/865/E27 220-240V	6	50	E27	6500	490	≥80	300	36,000	yes	36

## SPOTLUX™ (SMD)



## Features

- ✓ Built using high quality SMD 2835 Epistar® LED chip.
- ✓ Lifetime upto 30,000 hrs.
- ✓ Thermoplastic housing for excellent heat dissipation properties.
- ✓ Ideal replacements for 20W, 35W and 50W halogen lamps.
- ✓ Compatible with all leading Magnetic and Electronic transformers in the market.
- ✓ No Flickering, No UV and No IR under specifically tested conditions.
- ✓ Excellent CRI >80.

## Applications

- ✓ Typical indoor luminaire
- ✓ Exhibition hall and department store
- ✓ Hospitality
- ✓ Museum
- ✓ Shop
- ✓ Downlight for marking walkway, door, stair, etc.

Product Code	Product Description	Nom. Watts	Base	CCT (K)	Initial Lumen(lm)	CRI (Ra)	Beam Angle(°)	Rated Avg. Life(hrs.)	Operating Voltage	Dimmable	Qty /Ctn
1050009	LED4/MR16SLX/SMD/830/GU5.3 12V	4	GU5.3	3000	250	≥80	38	30,000	12V	NO	50
1050010	LED4/MR16SLX/SMD/840/GU5.3 12V	4	GU5.3	4000	255	≥80	38	30,000	12V	NO	50
1050011	LED4/MR16SLX/SMD/865/GU5.3 12V	4	GU5.3	6500	260	≥80	38	30,000	12V	NO	50
1050012	LED5/MR16SLX/SMD/830/GU5.3 12V	5	GU5.3	3000	360	≥80	38	30,000	12V	NO	50
1050013	LED5/MR16SLX/SMD/840/GU5.3 12V	5	GU5.3	4000	370	≥80	38	30,000	12V	NO	50
1050014	LED5/MR16SLX/SMD/865/GU5.3 12V	5	GU5.3	6500	380	≥80	38	30,000	12V	NO	50
1050015	LED6/MR16SLX/SMD/830/GU5.3 12V	6	GU5.3	3000	500	≥80	38	30,000	12V	NO	50
1050016	LED6/MR16SLX/SMD/840/GU5.3 12V	6	GU5.3	4000	510	≥80	38	30,000	12V	NO	50
1050017	LED6/MR16SLX/SMD/865/GU5.3 12V	6	GU5.3	6500	550	≥80	38	30,000	12V	NO	50

## QUICKFIT GLASS™



## Features

- ✓ T8 shape with G13 base and integrated driver for easy installation.
- ✓ High luminous flux up to 100lm/W.
- ✓ Excellent light uniformity and unique heat dissipation technology.
- ✓ No dark spot on the edges of the lamp.
- ✓ 60% energy saving compared with LeKise T8 fluorescent and 40% compared with LeKise T5 fluorescent.
- ✓ Correlated color temperature: 3000K, 4000K and 6500K.
- ✓ Instant on, no flicker or buzz.

## Applications

- ✓ Indoor lighting such as;
  - Supermarket
  - Underground Parking Lot
  - Office
  - Warehouse
- ✓ Signage lighting

Product Code	Product Description	Nom. Watts	Base	CCT (K)	Initial Lumen(lm)	CRI (Ra)	Beam Angle(°)	Rated Avg. Life(hrs.)	Length (mm)	Power Factor	Qty /Ctn
1070001	LED9/T8G/600MM/730 220-240V	9	G13	3000	780	≥70	220	25,000	600	>0.5	25
1070002	LED9/T8G/600MM/740 220-240V	9	G13	4000	790	≥70	220	25,000	600	>0.5	25
1070003	LED9/T8G/600MM/765 220-240V	9	G13	6500	800	≥70	220	25,000	600	>0.5	25
1070004	LED18/T8G/1200MM/730 220-240V	18	G13	3000	1600	≥70	220	25,000	1200	>0.5	25
1070005	LED18/T8G/1200MM/740 220-240V	18	G13	4000	1620	≥70	220	25,000	1200	>0.5	25
1070006	LED18/T8G/1200MM/765 220-240V	18	G13	6500	1650	≥70	220	25,000	1200	>0.5	25

## QUICKFIT GUARD™



## Features

- ✓ T8 shape with G13 base and integrated driver for easy installation.
- ✓ High luminous flux up to 100lm/W.
- ✓ Excellent light uniformity and unique heat dissipation technology.
- ✓ No dark spot on the edges of the lamp.
- ✓ 60% energy saving compared with LeKise T8 fluorescent and 40% compared with LeKise T5 fluorescent.
- ✓ Correlated color temperature: 3000K, 4000K and 6500K.
- ✓ Instant on, no flicker or buzz.

## Applications

- ✓ Indoor lighting such as;
  - Supermarket
  - Underground Parking Lot
  - Office
  - Warehouse
- ✓ Signage lighting

Product Code	Product Description	Nom. Watts	Base	CCT (K)	Initial Lumen(lm)	CRI (Ra)	Beam Angle(°)	Rated Avg. Life(hrs.)	Length (mm)	Power Factor	Qty /Ctn
1070007	LED9/T8GP/600MM/830 220-240V	9	G13	3000	880	≥80	220	25,000	600	>0.9	25
1070008	LED9/T8GP/600MM/840 220-240V	9	G13	4000	890	≥80	220	25,000	600	>0.9	25
1070009	LED9/T8GP/600MM/865 220-240V	9	G13	6500	900	≥80	220	25,000	600	>0.9	25
1070010	LED18/T8GP/1200MM/830 220-240V	18	G13	3000	1750	≥80	220	25,000	1200	>0.9	25
1070011	LED18/T8GP/1200MM/840 220-240V	18	G13	4000	1780	≥80	220	25,000	1200	>0.9	25
1070012	LED18/T8GP/1200MM/865 220-240V	18	G13	6500	1800	≥80	220	25,000	1200	>0.9	25

## QUICKFIT PC™



## Features

- ✓ T8 shape with G13 base and integrated driver for easy installation.
- ✓ High luminous flux up to 100lm/W.
- ✓ Excellent light uniformity and unique heat dissipation technology.
- ✓ No dark spot on the edges of the lamp.
- ✓ 60% energy saving compared with LeKise T8 fluorescent and 40% compared with LeKise T5 fluorescent.
- ✓ Correlated color temperature: 3000K, 4000K and 6500K.
- ✓ Instant on, no flicker or buzz.

## Applications

- ✓ Indoor lighting such as;
  - Supermarket
  - Underground Parking Lot
  - Office
  - Warehouse
- ✓ Signage lighting

Product Code	Product Description	Nom. Watts	Base	CCT (K)	Initial Lumen(lm)	CRI (Ra)	Beam Angle(°)	Rated Avg. Life(hrs.)	Length (mm)	Power Factor	Qty /Ctn
1070013	LED9/T8PC/600MM/830 220-240V	9	G13	3000	880	≥80	140	25,000	600	>0.9	25
1070014	LED9/T8PC/600MM/840 220-240V	9	G13	4000	890	≥80	140	25,000	600	>0.9	25
1070015	LED9/T8PC/600MM/865 220-240V	9	G13	6500	900	≥80	140	25,000	600	>0.9	25
1070016	LED18/T8PC/1200MM/830 220-240V	18	G13	3000	1750	≥80	140	25,000	1200	>0.9	25
1070017	LED18/T8PC/1200MM/840 220-240V	18	G13	4000	1780	≥80	140	25,000	1200	>0.9	25
1070018	LED18/T8PC/1200MM/865 220-240V	18	G13	6500	1800	≥80	140	25,000	1200	>0.9	25



## LED FIXTURES

LeKise provides you the premium quality for LED indoor fixtures with styling, efficiency and performance. Designed for quick installation and less labour expense.



VIVO™



LUXE™ (HM)



LUXE™ (HR)



ULTRASLIM (SQUARE)



ULTRASLIM (ROUND)



T5 BATLINE™



## VIVO™



## Features

- ✓ Built with using SMD 2835 LED Chip.
- ✓ Integrated driver and lamp design with excellent heat dissipation.
- ✓ Long lifetime of more than 30,000 hrs. and CRI >80.
- ✓ No RF interference and with Anti-electromagnetic interference.
- ✓ Instant start, no flash, no abnormal noise.
- ✓ High-Efficiency with energy saving up to 60-80%.
- ✓ Convenient for installation and maintenance.
- ✓ Excellent uniform 3 color temperature options available.

## Applications

- ✓ Hotel, conference and meeting room
- ✓ Factory and office
- ✓ Commercial purpose including residential and institution building
- ✓ School, college and university
- ✓ Hospital
- ✓ Other lighting

Product Code	Product Description	Nom. Watts	CCT (K)	Initial Lumen(lm)	CRI (Ra)	Beam Angle(°)	Rated Current (A)	Power Factor	Rated Avg. Life(hrs.)	Cut Hole Size (mm)	Qty /Ctn
1060037	LED3/DL/VIVO/81/I/830/110/100-240V	3	3000	180	≥80	110	0.18	0.50	30,000	81	8
1060038	LED3/DL/VIVO/81/I/840/110/100-240V	3	4000	200	≥80	110	0.18	0.50	30,000	81	8
1060039	LED3/DL/VIVO/81/I/865/110/100-240V	3	6500	210	≥80	110	0.18	0.50	30,000	81	8
1060040	LED7/DL/VIVO/101/I/830/110/100-240V	7	3000	420	≥80	110	0.24	0.95	30,000	101	8
1060041	LED7/DL/VIVO/101/I/840/110/100-240V	7	4000	470	≥80	110	0.24	0.95	30,000	101	8
1060042	LED7/DL/VIVO/101/I/865/110/100-240V	7	6500	490	≥80	110	0.24	0.95	30,000	101	8
1060043	LED9/DL/VIVO/120/I/830/110/100-240V	9	3000	630	≥80	110	0.24	0.95	30,000	120	8
1060044	LED9/DL/VIVO/120/I/840/110/100-240V	9	4000	700	≥80	110	0.24	0.95	30,000	120	8
1060045	LED9/DL/VIVO/120/I/865/110/100-240V	9	6500	720	≥80	110	0.24	0.95	30,000	120	8
1060046	LED15/DL/VIVO/170/I/830/110/100-240V	15	3000	1125	≥80	110	0.24	0.95	30,000	170	8
1060047	LED15/DL/VIVO/170/I/840/110/100-240V	15	4000	1260	≥80	110	0.24	0.95	30,000	170	8
1060048	LED15/DL/VIVO/170/I/865/110/100-240V	15	6500	1275	≥80	110	0.24	0.95	30,000	170	8

## LUXE™ HM



## Features

- ✓ Build with SMD 5630 LG® LED chip.
- ✓ High reflective PC with deep cavity reflector and optical PMMA diffusion shell.
- ✓ Life span of 30,000 hrs. offering increased lifetime.
- ✓ Varied appearance and rapid heat distribution.
- ✓ No infrared ray, No ultra violet ray and no mercury pollutions.
- ✓ Patent V type heat dissipation design increases air convection.
- ✓ Snap with heat shrinkable sleeve and also supports easy installation.
- ✓ Twin core cable for safety and prevents electric shocks.

## Applications

- ✓ Home lighting
- ✓ Retail lighting
- ✓ Hotel
- ✓ Restaurant
- ✓ Corridors, hallway

Product Code	Product Description	Nom. Watts	CCT (K)	Initial Lumen(lm)	CRI (Ra)	Beam Angle(°)	Rated Avg. Life(hrs.)	Height (mm)	Diameter (mm)	Cut Hole Size (mm)	Qty /Ctn
1060001	LED5/DL/LXM/80/E/830/75/220-240V	5	3000	330	≥80	75	30,000	47	90	80	18
1060002	LED5/DL/LXM/80/E/840/75/220-240V	5	4000	370	≥80	75	30,000	47	90	80	18
1060003	LED5/DL/LXM/80/E/865/75/220-240V	5	6500	400	≥80	75	30,000	47	90	80	18
1060004	LED6/DL/LXM/100/E/830/75/220-240V	6	3000	420	≥80	75	30,000	60	110	100	18
1060005	LED6/DL/LXM/100/E/840/75/220-240V	6	4000	480	≥80	75	30,000	60	110	100	18
1060006	LED6/DL/LXM/100/E/865/75/220-240V	6	6500	520	≥80	75	30,000	60	110	100	18
1060007	LED9/DL/LXM/120/E/830/80/220-240V	9	3000	700	≥80	80	30,000	72	130	120	18
1060008	LED9/DL/LXM/120/E/840/80/220-240V	9	4000	800	≥80	80	30,000	72	130	120	18
1060009	LED9/DL/LXM/120/E/865/80/220-240V	9	6500	850	≥80	80	30,000	72	130	120	18
1060010	LED14/DL/LXM/175/E/830/80/220-240V	14	3000	1100	≥80	80	30,000	94	185	175	8
1060011	LED14/DL/LXM/175/E/840/80/220-240V	14	4000	1200	≥80	80	30,000	94	185	175	8
1060012	LED14/DL/LXM/175/E/865/80/220-240V	14	6500	1400	≥80	80	30,000	94	185	175	8
1060013	LED29/DL/LXM/210/E/830/80/220-240V	29	3000	2300	≥80	80	30,000	116	220	210	8
1060014	LED29/DL/LXM/210/E/840/80/220-240V	29	4000	2500	≥80	80	30,000	116	220	210	8
1060015	LED29/DL/LXM/210/E/865/80/220-240V	29	6500	2700	≥80	80	30,000	116	220	210	8
1060016	LED42/DL/LXM/210/E/830/80/220-240V	42	3000	3300	≥80	80	30,000	116	220	210	8
1060017	LED42/DL/LXM/210/E/840/80/220-240V	42	4000	3700	≥80	80	30,000	116	220	210	8
1060018	LED42/DL/LXM/210/E/865/80/220-240V	42	6500	4200	≥80	80	30,000	116	220	210	8

LUXE™ HR



Features

- ✓ Built with high quality LG® SMD 5630 LED chip.
- ✓ Anti glare non-vacuum coated reflector with UGR<19.
- ✓ Modular design with high reliability.
- ✓ Safety and electric shock safeguard with easy to install features.
- ✓ Lifespan of 30,000 hrs.
- ✓ Patent V type heat dissipation design increases air convection.

Applications

- ✓ Home lighting
- ✓ Retail lighting
- ✓ Hotel
- ✓ Restaurant
- ✓ Corridor, hallway

Product Code	Product Description	Nom. Watts	CCT (K)	Initial Lumen(lm)	CRI (Ra)	Beam Angle(°)	Rated Avg. Life(hrs.)	Height (mm)	Diameter (mm)	Cut Hole Size (mm)	Qty /Ctn
1060019	LED5/DL/LXR/80/E/830/75/220-240V	5	3000	330	≥80	75	30,000	47	90	80	18
1060020	LED5/DL/LXR/80/E/840/75/220-240V	5	4000	370	≥80	75	30,000	47	90	80	18
1060021	LED5/DL/LXR/80/E/865/75/220-240V	5	6500	400	≥80	75	30,000	47	90	80	18
1060022	LED6/DL/LXR/100/E/830/75/220-240V	6	3000	430	≥80	75	30,000	60	110	100	18
1060023	LED6/DL/LXR/100/E/840/75/220-240V	6	4000	480	≥80	75	30,000	60	110	100	18
1060024	LED6/DL/LXR/100/E/865/75/220-240V	6	6500	520	≥80	75	30,000	60	110	100	18
1060025	LED9/DL/LXR/120/E/830/80/220-240V	9	3000	700	≥80	80	30,000	72	130	120	18
1060026	LED9/DL/LXR/120/E/840/80/220-240V	9	4000	750	≥80	80	30,000	72	130	120	18
1060027	LED9/DL/LXR/120/E/865/80/220-240V	9	6500	800	≥80	80	30,000	72	130	120	18
1060028	LED14/DL/LXR/175/E/830/80/220-240V	14	3000	1220	≥80	80	30,000	94	185	175	8
1060029	LED14/DL/LXR/175/E/840/80/220-240V	14	4000	1320	≥80	80	30,000	94	185	175	8
1060030	LED14/DL/LXR/175/E/865/80/220-240V	14	6500	1410	≥80	80	30,000	94	185	175	8
1060031	LED29/DL/LXR/210/E/830/80/220-240V	29	3000	2300	≥80	80	30,000	116	220	210	8
1060032	LED29/DL/LXR/210/E/840/80/220-240V	29	4000	2500	≥80	80	30,000	116	220	210	8
1060033	LED29/DL/LXR/210/E/865/80/220-240V	29	6500	2650	≥80	80	30,000	116	220	210	8
1060034	LED42/DL/LXR/210/E/830/80/220-240V	42	3000	3400	≥80	80	30,000	116	220	210	8
1060035	LED42/DL/LXR/210/E/840/80/220-240V	42	4000	3650	≥80	80	30,000	116	220	210	8
1060036	LED42/DL/LXR/210/E/865/80/220-240V	42	6500	3900	≥80	80	30,000	116	220	210	8

\*Based on 2.7 hours per day.

ULTRASLIM (SQUARE TYPE)



Features

- ✓ Built with LM80 certified SMD 2835 LED chip.
- ✓ External Driver built with American Slivery IC technology.
- ✓ Aviation aluminum material with good thermal management and endure 3000V high pot test.
- ✓ Light guide plate made with special PMMA grade material from Taiwan Qime.
- ✓ Lifetime support of more than 35,000 hrs.
- ✓ Easy installation with architecturally pleasing look.
- ✓ Comply with standards of photo biological safety EN62471.

Applications

- ✓ Residential application
- ✓ Factory and office
- ✓ Various hallway and corridor
- ✓ Basement, entry way, porche, stairway
- ✓ Conference and meeting room

Product Code	Product Description	Nom. Watts	CCT (K)	Initial Lumen(lm)	CRI (Ra)	Beam Angle(°)	Rated Avg. Life(hrs.)@L70	Length, Breadth (mm)	Height (mm)	Cut Hole Size (mm)	Qty /Ctn
1060064	LED3/DL/SLS/70/E/830/110/220-240V	3	3000	120	80	110	35,000	85	11	70	20
1060065	LED3/DL/SLS/70/E/840/110/220-240V	3	4000	130	80	110	35,000	85	11	70	20
1060066	LED3/DL/SLS/70/E/865/110/220-240V	3	6500	150	80	110	35,000	85	11	70	20
1060067	LED5/DL/SLS/93/E/830/110/220-240V	5	3000	200	80	110	35,000	106	13	93	20
1060068	LED5/DL/SLS/93/E/840/110/220-240V	5	4000	230	80	110	35,000	106	13	93	20
1060069	LED5/DL/SLS/93/E/865/110/220-240V	5	6500	250	80	110	35,000	106	13	93	20
1060070	LED7/DL/SLS/110/E/830/110/220-240V	7	3000	300	80	110	35,000	120	13	120	20
1060071	LED7/DL/SLS/110/E/840/110/220-240V	7	4000	330	80	110	35,000	120	13	120	20
1060072	LED7/DL/SLS/110/E/865/110/220-240V	7	6500	350	80	110	35,000	120	13	120	20

Product Code	Product Description	Nom. Watts	CCT (K)	Initial Lumen(lm)	CRI (Ra)	Beam Angle(°)	Rated Avg. Life(hrs.)@L70	Length, Breadth (mm)	Height (mm)	Cut Hole Size (mm)	Qty /Ctn
1060073	LED12/DL/SLS/160/E/830/110/220-240V	12	3000	700	80	110	35,000	172	13	172	20
1060074	LED12/DL/SLS/160/E/840/110/220-240V	12	4000	750	80	110	35,000	172	13	172	20
1060075	LED12/DL/SLS/160/E/865/110/220-240V	12	6500	800	80	110	35,000	172	13	172	20
1060076	LED18/DL/SLS/213/E/830/110/220-240V	18	3000	1100	80	110	35,000	225	13	225	20
1060077	LED18/DL/SLS/213/E/840/110/220-240V	18	4000	1190	80	110	35,000	225	13	225	20
1060078	LED18/DL/SLS/213/E/865/110/220-240V	18	6500	1260	80	110	35,000	225	13	225	20

## ULTRASLIM (ROUND TYPE)



### Features

- ✓ Built with LM80 certified SMD 2835 LED chip.
- ✓ External Driver built with American Slivery IC technology.
- ✓ Aviation aluminum material with good thermal management and endure 3000V high pot test.
- ✓ Light guide plate made with special PMMA grade material from Taiwan Qimei.
- ✓ Lifetime support of more than 35,000 hrs.
- ✓ Easy installation with architecturally pleasing look.
- ✓ Comply with standards of photo biological safety EN62471.

### Applications

- ✓ Residential application
- ✓ Factory and office
- ✓ Various hallway and corridor
- ✓ Basement, entry way, porche, stairway
- ✓ Conference and meeting room

Product Code	Product Description	Nom. Watts	CCT (K)	Initial Lumen(lm)	CRI (Ra)	Beam Angle(°)	Rated Avg. Life(hrs.)@L70	Diameter (mm)	Height (mm)	Cut Hole Size (mm)	Qty /Ctn
1060049	LED3/DL/SLR/70/E/830/110/220-240V	3	3000	120	80	110	35,000	85	11	70-75	20
1060050	LED3/DL/SLR/70/E/840/110/220-240V	3	4000	130	80	110	35,000	85	11	70-75	20
1060051	LED3/DL/SLR/70/E/865/110/220-240V	3	6500	150	80	110	35,000	85	11	70-75	20
1060052	LED5/DL/SLR/95/E/830/110/220-240V	5	3000	200	80	110	35,000	106	13	95-100	20
1060053	LED5/DL/SLR/95/E/840/110/220-240V	5	4000	230	80	110	35,000	106	13	95-100	20
1060054	LED5/DL/SLR/95/E/865/110/220-240V	5	6500	250	80	110	35,000	106	13	95-100	20
1060055	LED7/DL/SLR/110/E/830/110/220-240V	7	3000	300	80	110	35,000	120	13	110-115	20
1060056	LED7/DL/SLR/110/E/840/110/220-240V	7	4000	330	80	110	35,000	120	13	110-115	20
1060057	LED7/DL/SLR/110/E/865/110/220-240V	7	6500	350	80	110	35,000	120	13	110-115	20
1060058	LED12/DL/SLR/160/E/830/110/220-240V	12	3000	700	80	110	35,000	172	13	160-165	20
1060059	LED12/DL/SLR/160/E/840/110/220-240V	12	4000	750	80	110	35,000	172	13	160-165	20
1060060	LED12/DL/SLR/160/E/865/110/220-240V	12	6500	800	80	110	35,000	172	13	160-165	20
1060061	LED18/DL/SLR/213/E/830/110/220-240V	18	3000	1100	80	110	35,000	225	13	222-230	20
1060062	LED18/DL/SLR/213/E/840/110/220-240V	18	4000	1190	80	110	35,000	225	13	222-230	20
1060063	LED18/DL/SLR/213/E/865/110/220-240V	18	6500	1260	80	110	35,000	225	13	222-230	20

## T5 BATLINE™



## Features

- ✓ 2835 SMD LED Chip with LM80 certified.
- ✓ Body and diffuser cover made by Mitsubishi® PC material.
- ✓ Optimized extruded Aluminum heat sink inside to ensure proper working environment, also gives highly efficient reflection.
- ✓ Color temperatures available for 3000K, 4000K and 6500K.
- ✓ High efficacy up to 80lm/W with CRI >80.
- ✓ Support within 10 pcs. in series connection to lower wiring cost.
- ✓ Long life up to 35,000 hrs. with 2 years limited warranty.

## Applications

- ✓ Showroom
- ✓ Shelf
- ✓ Cove
- ✓ Convenient Store

Product Code	Product Description	Operating Voltage	Nom. Watts	CCT (K)	Initial Lumen(lm)	CRI (Ra)	Beam Angle(°)	Rated Avg. Life(hrs.)@L70	Dimension (mm.)			Power Factor	Qty /Ctn
									W	H	L		
1080001	LED5/T5BAT/300MM/L/830 100-240V	100-240V	5	3000	400	80	110-120	35,000	23.5	32	325	>0.9	25
1080002	LED5/T5BAT/300MM/L/840 100-240V	100-240V	5	4000	420	80	110-120	35,000	23.5	32	325	>0.9	25
1080003	LED5/T5BAT/300MM/L/865 100-240V	100-240V	5	6500	440	80	110-120	35,000	23.5	32	325	>0.9	25
1080004	LED10/T5BAT/600MM/L/830 100-240V	100-240V	10	3000	800	80	110-120	35,000	23.5	32	585	>0.9	25
1080005	LED10/T5BAT/600MM/L/840 100-240V	100-240V	10	4000	840	80	110-120	35,000	23.5	32	585	>0.9	25
1080006	LED10/T5BAT/600MM/L/865 100-240V	100-240V	10	6500	880	80	110-120	35,000	23.5	32	585	>0.9	25
1080007	LED15/T5BAT/900MM/L/830 100-240V	100-240V	15	3000	1200	80	110-120	35,000	23.5	32	885	>0.9	25
1080008	LED15/T5BAT/900MM/L/840 100-240V	100-240V	15	4000	1250	80	110-120	35,000	23.5	32	885	>0.9	25
1080009	LED15/T5BAT/900MM/L/865 100-240V	100-240V	15	6500	1300	80	110-120	35,000	23.5	32	885	>0.9	25
1080010	LED20/T5BAT/1200MM/L/830 100-240V	100-240V	20	3000	1600	80	110-120	35,000	23.5	32	1185	>0.9	25
1080011	LED20/T5BAT/1200MM/L/840 100-240V	100-240V	20	4000	1650	80	110-120	35,000	23.5	32	1185	>0.9	25
1080012	LED20/T5BAT/1200MM/L/865 100-240V	100-240V	20	6500	1700	80	110-120	35,000	23.5	32	1185	>0.9	25



## SWITCHES & SOCKETS

LeKise switches and sockets provide complete flexibility relating to requirement and need. Designed to be interchangeable and easy to assemble and remove. Made with high quality plastic material.



SWITCH

SOCKET

COVER

SURFACE 2x4

SURFACE 4x4

## SWITCH



## Features

- ✓ Built with high quality polycarbonate material with improved flame retardant characteristics.
- ✓ Perfect fit for any kind of interior designs.
- ✓ Highly durable with compact design.
- ✓ Anti-high pressure and fire resistant materials.
- ✓ Available in both 1 way and 2 way gang designs.
- ✓ Surge protection for Safety purpose.

## Applications

- ✓ All kinds of Indoor lighting and electrical appliances application.
- ✓ All kinds of domestic and commercial application.

Product Code	Product Description	Wide (mm)	Length (mm)	Hight (mm)	Qty /Ctn
1282634001	One Way Switch	23.00	44.50	32.75	10/100
1282635001	Two Way Switch	23.00	44.50	32.75	10/100

## SOCKET



## Features

- ✓ Built with high quality polycarbonate materials with improved flame retardant characteristics.
- ✓ Large and deep connection hole which guarantee the safety of electric wire.
- ✓ Thin design with easy installation.
- ✓ Used for all kinds of domestic and commercial appliances.
- ✓ Surge protection for safety purpose.
- ✓ Excellent UV resistance with long lasting and stable color.

## Applications

- ✓ For application such as TV and Telephone installation.

Product Code	Product Description	Wide (mm)	Length (mm)	Hight (mm)	Qty /Ctn
1282636001	2P Socket 16A	23.00	44.30	28.00	10/100
1282644001	3P Simplex Socket EURO-US Standard	45.40	44.00	31.00	10/60
1282637001	3P Duplex Socket EURO-US Standard	68.50	43.50	29.00	10/60
1282642001	Telephone Socket RJ11	23.00	42.00	25.50	10/100
1282641001	TV Socket, Shunted for Remotely Fed Female	23.00	42.00	26.00	10/100
1282643001	Computer RJ45 Cat.5E, Toolless Type	23.00	42.00	35.00	10/100

## COVER



## Features

- ✓ High quality PC material with Excellent UV resistance and long lasting stable color.
- ✓ Anti-high pressure with good ductility and stable shape.

## Applications

- ✓ All kinds of Switch and connector cover installation

Product Code	Product Description	Wide (mm)	Length (mm)	Hight (mm)	Qty /Ctn
1282638001	1 Gang Cover Plate	120.00	70.00	9.50	10/100
1282639001	2 Gang Cover Plate	120.00	70.00	9.50	10/100
1282640001	3 Gang Cover Plate	120.00	70.00	9.50	10/100

## SURFACE BOX 2X4 Modules



Product Code	Product Description	Wide (mm)	Length (mm)	Hight (mm)	Qty /Ctn
1282921001	Surface Box 2X4 Modules	120.00	70.00	35.00	50

## SURFACE BOX 4X4 Modules



Product Code	Product Description	Wide (mm)	Length (mm)	Hight (mm)	Qty /Ctn
1282922001	Surface Box 4x4 Modules	120.00	114.00	35.00	50









Thailand (Head Office)

**LeKise Lighting Co., Ltd.**

29/11 Moo 3, Rama 2 Road,  
T. Nadee, A. Muang, Samutsakhon  
74000, Thailand  
T. +66(0) 3441 9299  
F. +66(0) 3441 9298

Cambodia

**LeKise Lighting Co., Ltd.**

18th Floor Canadia Tower  
#315, Monivong Blvd. Conner  
Ang Doung street  
Phnom Penh, Cambodia  
T. +85 51 632 7131  
F. +85 52 396 2310

China

**LeKise Trading (Shenzhen) Co., Ltd.**

Level 13, Kerry Plaza Tower 3,  
No.1-1 Zhong Xin Si Road,  
Futian District, Shenzhen 518048,  
P.R. China  
T. +86 755 3304 6686-90

Laos

**LeKise International (Lao) Co., Ltd.**

Phontongsawad Village,  
Sibounheung Rd.,Chanthaburi District,  
Vientiane Capital, Lao P.D.R.  
T. +856 21 418123

Malaysia/Singapore/Brunei

**LeKise Lighting Co., Ltd.**

Level 30, The Gardens North Tower  
Mid Valley City, Lingkaran Syed Putra  
59200, Kuala Lumpur, Malaysia  
T. + 603 2035 9220-1  
F. + 603 2035 9797

Myanmar

**LeKise Lighting Co., Ltd.**

No. 129, 36th Street,  
Kyauktada Township,  
Yangon, Myanmar  
T. +95 (1) 387 940

Philippines/Papua New Guinea

**LeKise Lighting Co., Ltd.**

LKG Tower 37th Floor, 6801 Ayala Avenue  
Makati City 1226, Philippines  
T. +63 (2) 859 2829  
F. +63 (2) 859 2882

Vietnam

**LeKise International (Vietnam) Co.,Ltd**

Centec Tower, 4/F,  
72-74 Nguyen Thi Minh Khai Street.,  
District 3, Ho Chi Minh City, Vietnam  
T. +84 8 6299 9422

**LeKise**  
TURN THE LIFE ON